

ALLESTIMENTO  
**VEICOLI COMMERCIALI**

TECNOLAM VAN

*Van racking systems*  
*Aménagements pour véhicules utilitaires*

**CATALOGO 2019**





TECNOLAM VAN

**Azienda**

Company

Société

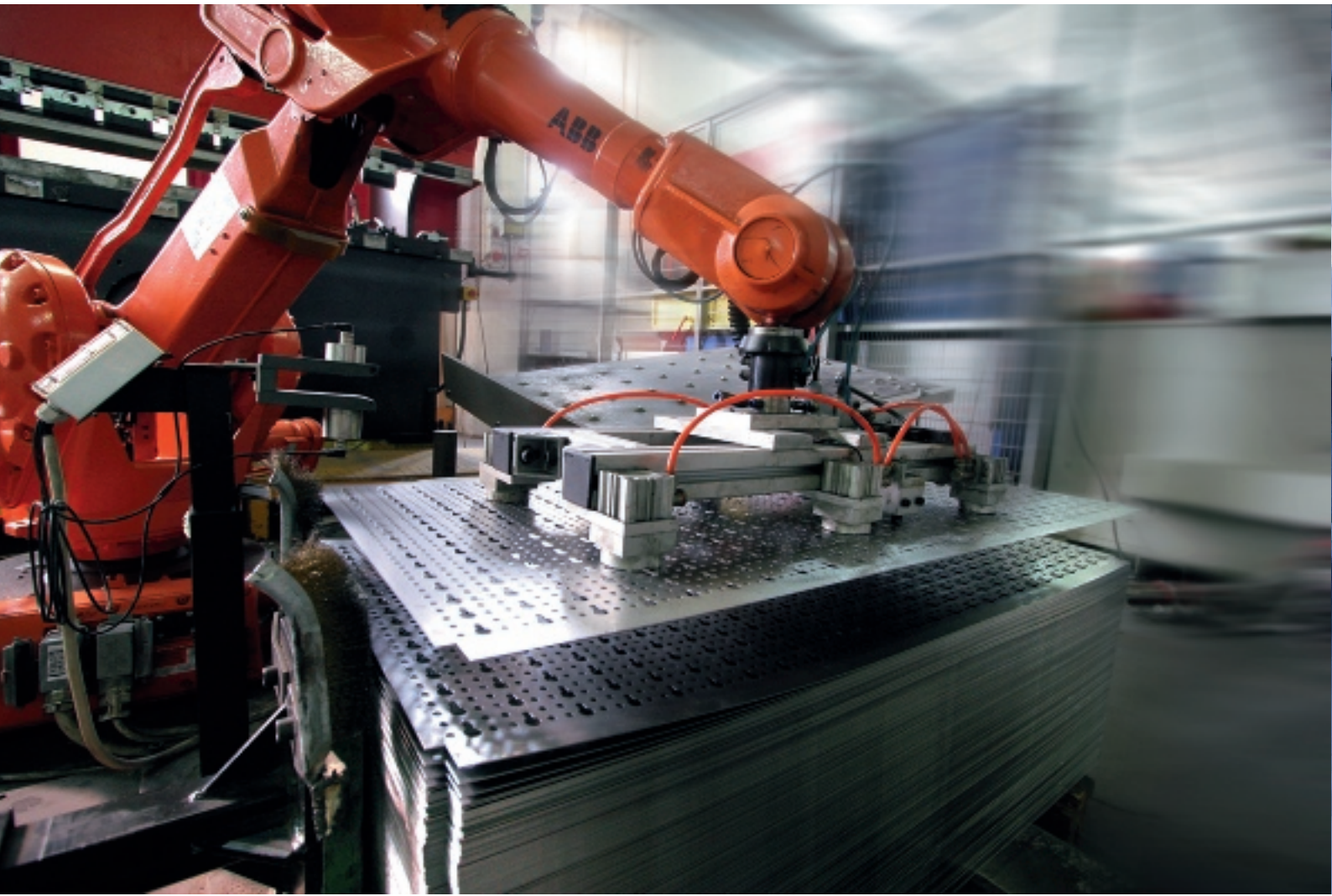
Tecnolam è un'azienda nata nel 1981. Nei primi anni la produzione principale era la lavorazione della lamiera per conto terzi, ma il richiamo alla produzione di prodotti finiti, ed in particolare di sistemi d'ordine per utensili divenne fortissima, anche perchè alcuni titolari provenivano da quel settore. Nel corso di questi 30 anni Tecnolam è riuscita a divenire un'azienda leader nel settore dei sistemi d'ordine per furgoni.

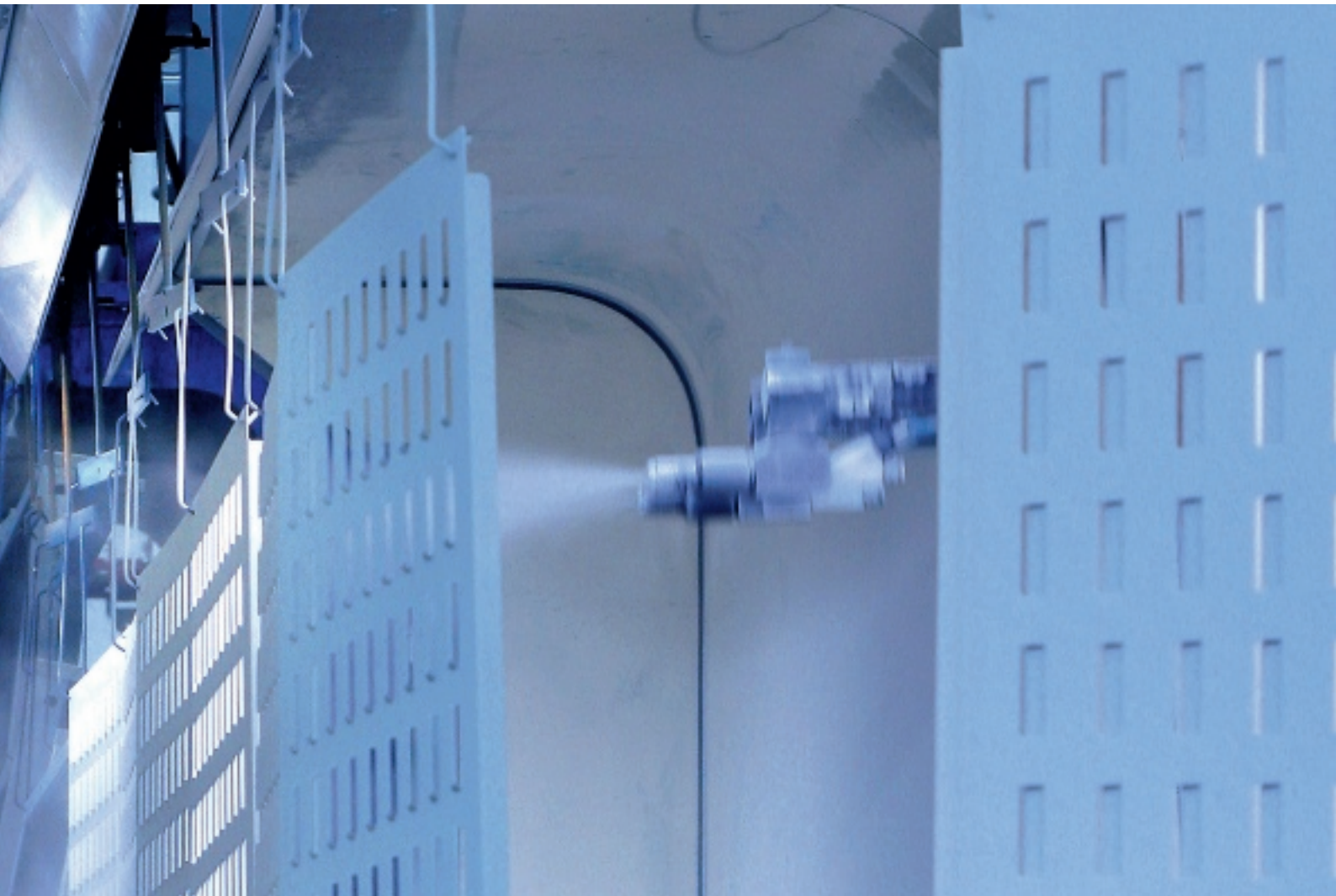
Tecnolam è una vera azienda produttrice con una strategia innovativa (composta da una serie di ditte ognuna specializzata a produrre un preciso articolo) in grado di competere con qualsiasi concorrente europeo o mondiale.

Tecnolam was founded in 1981. During the first years the main production was the steel machining on behalf of third parties. Then the request of finished goods, and in particular of tools order systems became very strong, since some of Tecnolam partners came from that sector. During these 30 years Tecnolam has succeeded in becoming a leader company in the field of tools order van. Tecnolam is a real manufacturing company with an innovating strategy (as it is composed of a series of companies, each one specialised in the production of a specific item) and it's able to compete with any competitor in Europe and in the World.

Tecnolam est une société née en 1981. Pendant les premières années la production principale était le travail de la tôle pour compte d'autrui, mais l'appel à la production des produits finis, et en particulière des systèmes de rangement pour l'outillage, était très fort, puisque quelques-uns des propriétaires de Tecnolam venaient de ce secteur. Pendant ces 25 ans Tecnolam a réussi à devenir une société leader dans le secteur des systèmes de rangement pour camionnette. TECNOLAM est une vraie société productrice, avec une stratégie innovatrice (composée par une série de société chacune spécialisée pour la production d'un article spécifique) et en mesure de rivaliser avec n'importe quel concurrent Européen ou Mondiale.







## **La passione per il meglio**

Passion for the best

La passion pour le mieux



<b>Copripassaruota</b>	10
Wheelhouse cover	
Couvre passage de roue	
<b>KIT Fermavaligie</b>	22
Case-holder	
Kit arrête-valises	
<b>Cassettiere</b>	23
Chests of drawers	
Blocs à tiroir	
<b>Cassettiere con valigie</b>	32
Chests of drawers whit trays and cases	
Blocs à tiroirs avec plateaux e mallettes	
<b>Scaffalature con cassetti basculanti</b>	44
Shelvings with trasparent containers	
Etageres avec bacs trasparenti	
<b>Armadi</b>	45
Cupboard units	
Armoires	
<b>Scaffalature</b>	48
Shelvings	
Etagères	
<b>Grondaie</b>	59
Gutters	
Gouttières	
<b>Piane di lavoro in legno</b>	60
Wood worktop	
Planches de travail en bois	



<b>Morse e porta morse</b>	62
Vice and vice holder	
Etau et Porte-étau	
<b>Cassettiere sottopianale</b>	66
Underfloor chest of drawers	
Blocs à tiroirs sous-plancher	
<b>Slitta portageneratore</b>	68
Slide for electric generator	
Plateau coulissant porte-generator	
<b>Rampe di carico</b>	69
Loading ramps	
Rampes de chargement	
<b>Portatutto e porta scale</b>	70
Rack roof and ladder	
Porte tout et porte-échelles	
<b>Pianali / Rivestimenti interni</b>	71
Floors / Internal Linings	
Planchers / Revêtements intérieurs	
<b>Accessori bloccaggio materiali</b>	73
Blocking Accessories	
Accessoires de blocage du matériel	
<b>Accessori vari</b>	81
Various Accessories	
Accessoires	
<b>Accessori elettrici</b>	91
Electric Accessories	
Accessoires électriques	



**Senza disordine guadagni tempo e denaro!**

*Without disorganization you save time and money*

*Sans désordre, vous gagnez du temps et de l'argent*



**La professionalità richiede ordine**

*Professionalism calls organization*

*Le professionnalisme exige de l'ordre*







TECNOLAM VAN

### Certificazioni

Certifications

Certifications

  
**TEST REPORT**  
**RAPPORTO DI PROVA**  
**Frontal impact on model TI-VAN**  
**Prova di urto frontale su allestimento TI-VAN**

---

**CUSTOMER (Richiedente):**

- Dept./Firm (ente/Società): Tecnolam S.r.l.
- Mr./Mrs (Sig./Sig.ra): Luca Secocini
- Address (Indirizzo): Via Fiammia 2/b, I-51030 Calcinella di Saltara (PU)

---

<b>Test Request Form no.:</b> Model Reference Form no.:	<b>Test Report sent to:</b> Rapporto inviato a:
MEC19079.23	Mr. Luca Secocini

---

<b>Name and Signature of the Client (signed):</b> Nome e Firma esecutore (firma):	<b>Name and Signature of the Technical reviewer:</b> Nome e Firma del Revisore tecnico:
Pietro Vegari 	Maurizio Leone 

---

<b>Date of test sample receipt:</b> Data ricevimento campione:	<b>Date of test execution:</b> Data esecuzione prova:
2015-02-10	2015-03-10

---


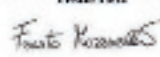
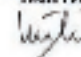
<b>Site of test execution (if different from the address in the header):</b> Località esecuzione prova (se diversa dall'indirizzo):	<b>Witness Authority:</b> Presenziante prova:
CSI S.p.A. - Via Lombrada, 22 I-20021 Bollate (MI)	Mr. Brizzolini Renato

---

The test results are correct as far as the report relates to the model completely only.  
I risultati del presente rapporto devono essere considerati esclusivamente al campione sottoposto a prova.  
Le "test" reproduction of the present test report is allowed: the same reproduction must be authorized in writing by the Lab.  
L'uso e la riproduzione integrale del presente rapporto di prova da parte del Richiedente, in qualunque forma  
dell'opera e non risulta per nulla valida e autorizzata.

---

Form: TA_0018 (Rev. 01 - October 2014)	Emp/manager:	Phone: +39 051 240911	Title: CE
Telephone no: MEC19079.23	Responsible:	Fax: +39 051 240999	Division: PDR/COM
Address: 00	Site/Address:	Manufacturers:	PI 10075-00119
Document code: MEC19079.23/Rev	Site/Address: 00-1-0001	Manufacturer:	10018/Scansys/Italy
Page 1 of 6		<b>TUV</b>	

	<b>RAPPORTO DI PROVA</b> <i>(Test Report)</i>	Pag. <b>23</b> di <b>23</b>
	N° <b>0089/ME/CRIE/15_2</b>	Data: <b>03/07/2015</b>
Test: Vel: 31.5 kph Scope:	Date: <b>VAE</b> Desc: <b>low-speeding simulation of 30 g</b>	
DATA Date: <b>03/07/2015</b>	Resp. Sicurezza Attiva e Passiva Active and Passive Safety Board Team/Tam: 	A.D. Divisione Automotive Automotive Division CEO Team/Tam: 



## Copripassaruota

Wheelhouse cover

Couvre passage de roue



### Copripassaruota

Wheelhouse cover

Passage de roue

Fabbrichiamo 4 tipi di passaruota:

- aperti
- con anta basculante
- con anta a chiusura parziale
- con serranda in alluminio

We manufacture 4 different wheelhouse covers:

- Open
- With tilting door
- With aluminium hal door
- With aluminium rolling shutter

Nous réalisons 4 types de couvre passage de roue

- Ouvert
- Avec port basculant
- Avec porte à ferma partielle en aluminium

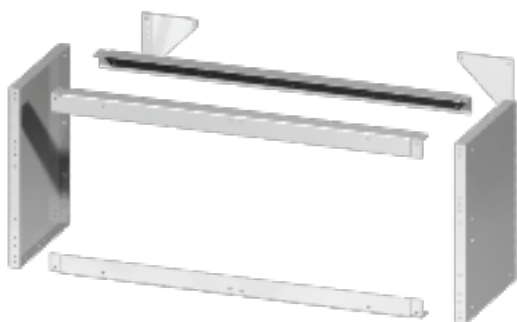
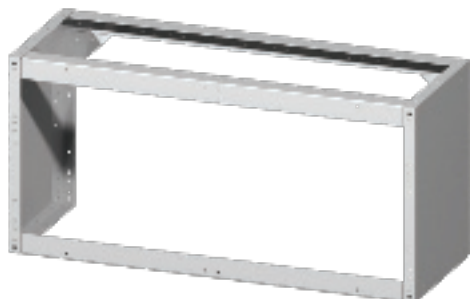


TECNOLAM VAN

## Copripassaruota

Wheelhouse cover

Couvre passage de roue



### Copripassaruota aperto

Open wheelhouse cover

Couvre passage de roues ouvert

**Il Copripassaruota aperto** è il più semplice visto che è composto solo da due fianchi, due triangoli di rinforzo e tre angolari

**The open wheelhouse cover** is the simplest model, as it's composed by two sides, two reinforcement triangles and three angle pieces.

**Le Couvre passage de roue ouvert**, est le modèle plus simple car il est composé par deux côtés, deux triangles de renfort et trois pièces angulaires.

Schema di montaggio per copri-passaruote aperto

Assembly drawing for open wheelhouse covers

Schéma de montage pour couvres passages de roue ouverts

## L507

Code	Dimension (LxHxD) mm	Weight (kg)
<b>010025011</b>	507X362X320	7,51
<b>010025012</b>	507X362X360	8,09
<b>010025013</b>	507X362X410	8,79
<b>010025014</b>	507X402X320	7,93
<b>010025015</b>	507X402X360	8,57
<b>010025016</b>	507X402X410	9,39
<b>010025017</b>	507X444X360	9,15
<b>010025018</b>	507X444X410	9,99
<b>010025019</b>	507X483X320	8,95
<b>010025006</b>	507X483X360	9,61
<b>010025021</b>	507X483X410	10,51





TECNOLAM VAN

## Copripassaruota

Wheelhouse cover  
Couvre passage de roue



### Copripassaruota aperto

Open wheelhouse cover  
Couvre passage de roues ouvert

### L760

Code	Dimension (LxHxD) mm	Weight (kg)
010025022	760X362X320	7,51
010025023	760X362X360	8,09
010025024	760X362X410	8,79
010025025	760X402X320	7,93
010025026	760X402X360	8,57
010025027	760X402X410	9,39
010025028	760X444X360	9,15
010025029	760X444X410	9,99
010025030	760X483X320	8,95
010025007	760X483X360	9,61
010025032	760X483X410	10,5

### L1014

Code	Dimension (LxHxD) mm	Weight (kg)
010025033	1.014X362X320	9,51
010025034	1.014X362X360	0,09
010025035	1.014X362X410	10,79
010025036	1.014X402X320	9,93
010025037	1.014X402X360	10,57
010025038	1.014X402X410	11,39
010025039	1.014X444X360	11,15
010025040	1.014X444X410	11,99
010025041	1.014X483X320	10,95
010025008	1.014X483X360	11,61
010025043	1.014X483X410	12,51

### L1268

Code	Dimension (LxHxD) mm	Weight (kg)
010025044	1.268X362X320	12,08
010025045	1.268X362X360	12,66
010025046	1.268X362X410	13,36
010025047	1.268X402X320	12,5
010025048	1.268X402X360	13,14
010025049	1.268X402X410	13,96
010025050	1.268X444X360	13,72
010025051	1.268X444X410	14,56
010025052	1.268X483X320	13,52
010025009	1.268X483X360	14,68
010025054	1.268X483X410	15,08

### L1521

Code	Dimension (LxHxD) mm	Weight (kg)
010025055	1.521X362X320	13,47
010025056	1.521X362X360	14,05
010025057	1.521X362X410	14,75
010025058	1.521X402X320	13,89
010025059	1.521X402X360	14,53
010025060	1.521X402X410	15,35
010025061	1.521X444X360	15,11
010025062	1.521X444X410	15,95
010025063	1.521X483X320	14,91
010025064	1.521X483X360	15,57
010025065	1.521X483X410	16,47



TECNOLAM VAN

## Copripassaruota

Wheelhouse cover  
Couvre passage de roue



### Copripassaruota aperto speciale

Special open wheelhouse cover  
Couvre passage de roues ouvert spécial

#### L507

Code	Dimension (LxHxD) mm	Weight (kg)
<b>010025801</b>	507X362X320	7,51
<b>010025811</b>	507X362X360	8,09
<b>010025816</b>	507X402X360	8,57
<b>010025821</b>	507X444X360	9,15
<b>010025850</b>	507X483X320	8,95
<b>010025101</b>	507X483X360	9,61

#### L760

Code	Dimension (LxHxD) mm	Weight (kg)
<b>010025802</b>	760X362X320	7,51
<b>010025812</b>	760X362X360	8,09
<b>010025817</b>	760X402X360	8,57
<b>010025822</b>	760X444X360	9,15
<b>010025851</b>	760X483X320	8,95
<b>010025102</b>	760X483X360	9,61

#### L1014

Code	Dimension (LxHxD) mm	Weight (kg)
<b>010025803</b>	1.014X362X320	9,51
<b>010025813</b>	1.014X362X360	0,09
<b>010025818</b>	1.014X402X360	10,57
<b>010025823</b>	1.014X444X360	11,15
<b>010025852</b>	1.014X483X320	10,95
<b>010025103</b>	1.014X483X360	11,61

#### L1268

Code	Dimension (LxHxD) mm	Weight (kg)
<b>010025804</b>	1.268X362X320	12,08
<b>010025814</b>	1.268X362X360	12,66
<b>010025819</b>	1.268X402X360	13,14
<b>010025824</b>	1.268X444X360	13,72
<b>010025853</b>	1.268X483X320	13,52
<b>010025104</b>	1.268X483X360	14,68

#### L1521

Code	Dimension (LxHxD) mm	Weight (kg)
<b>010025805</b>	1.521X362X320	13,47
<b>010025815</b>	1.521X362X360	14,05
<b>010025820</b>	1.521X402X360	14,53
<b>010025825</b>	1.521X444X360	15,11
<b>010025854</b>	1.521X483X320	14,91
<b>010025105</b>	1.521X483X360	15,57

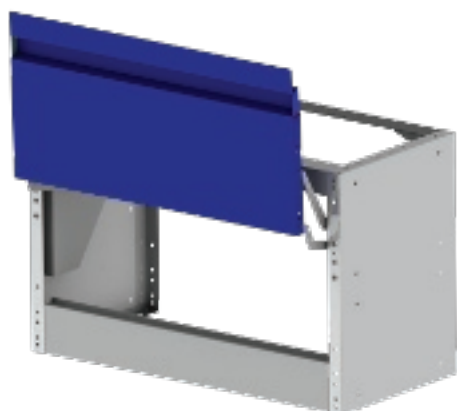


TECNOLAM VAN

## Copripassaruota

Wheelhouse cover

Couvre passage de roue



L'apertura e la chiusura dell'anta è facilitata da due molle a gas

Easy opening and closing trough gas spring

Ouverte e fermeture facile grace aux ressorts a gaz

### Copripassaruota con anta basculante

Open wheelhouse with tilting door

Couvre passage de roues ouvert avec porte

#### L507

Code	Dimension (LxHxD) mm	Weight (kg)
<b>010026513</b>	507x362x360	1,0
<b>010026514</b>	507X362X410	1,0
<b>010026515</b>	507X402X360	12,5
<b>010026516</b>	507X402X410	13,3
<b>010026517</b>	507X444X360	13,2
<b>010026518</b>	507X444X410	13,7
<b>010026519</b>	507X483X360	13,5
<b>010026520</b>	507X483X410	14,2

#### L760

Code	Dimension (LxHxD) mm	Weight (kg)
<b>010026521</b>	760x362x360	12,1
<b>010026522</b>	760X362X410	13,0
<b>010026523</b>	760X402X360	12,9
<b>010026524</b>	760X402X410	13,4
<b>010026525</b>	760X444X360	17,6
<b>010026526</b>	760X444X410	18,2
<b>010026527</b>	760X483X360	18,0
<b>010026528</b>	760X483X410	18,6

#### L1014

Code	Dimension (LxHxD) mm	Weight (kg)
<b>010026529</b>	1040x362x360	13,7
<b>010026530</b>	1040X362X410	14,5
<b>010026531</b>	1040X402X360	14,4
<b>010026532</b>	1040X402X410	14,9
<b>010026533</b>	1040X444X360	19,3
<b>010026534</b>	1040X444X410	19,9
<b>010026535</b>	1040X483X360	19,7
<b>010026536</b>	1040X483X410	20,3

#### L1268

Code	Dimension (LxHxD) mm	Weight (kg)
<b>010026537</b>	1268x362x360	15,4
<b>010026538</b>	1268X362X410	17,4
<b>010026539</b>	1268X402X360	17,4
<b>010026540</b>	1268X402X410	16,7
<b>010026541</b>	1268X444X360	22,0
<b>010026542</b>	1268X444X410	22,4
<b>010026543</b>	1268X483X360	22,3
<b>010026544</b>	1268X483X410	23,0

#### L1521

Code	Dimension (LxHxD) mm	Weight (kg)
<b>010026545</b>	1521x362x360	16,9
<b>010026546</b>	1521X362X410	17,0
<b>010026547</b>	1521X402X360	17,7
<b>010026548</b>	1521X402X410	18,2
<b>010026549</b>	1521X444X360	23,6
<b>010026550</b>	1521X444X410	27,2
<b>010026551</b>	1521X483X360	24,0
<b>010026552</b>	1521X483X410	24,6



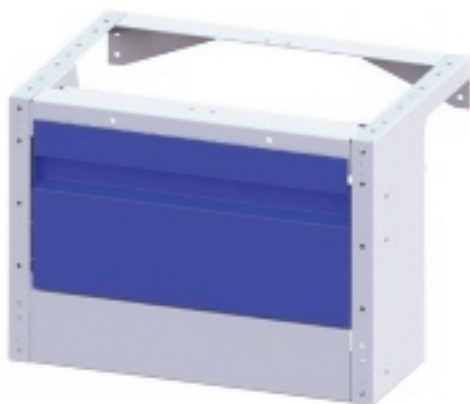


TECNOLAM VAN

## Copripassaruota

Wheelhouse cover

Couvre passage de roue



### Copripassaruota speciale con anta basculante

Special open wheelhouse with tilting door

Couvre passage de roue ouvert special/porte basculante

#### L507

Code	Dimension (LxHxD) mm	Weight (kg)
<b>010025846</b>	507X444X360	9,15
<b>010025106</b>	507X483X360	9,61

#### L760

Code	Dimension (LxHxD) mm	Weight (kg)
<b>010025847</b>	760X444X360	9,15
<b>010025107</b>	760X483X360	9,61

#### L1014

Code	Dimension (LxHxD) mm	Weight (kg)
<b>010025848</b>	1014X444X360	11,15
<b>010025108</b>	1014X483X360	11,61

#### L1268

Code	Dimension (LxHxD) mm	Weight (kg)
<b>010025849</b>	1268X444X360	13,72
<b>010025109</b>	1268X483X360	14,68

#### L1521

Code	Dimension (LxHxD) mm	Weight (kg)
<b>010025861</b>	1521X444X360	15,11
<b>010025110</b>	1521X483X360	15,57

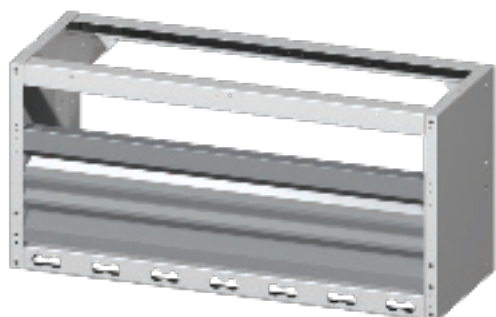


TECNOLAM VAN

## Copripassaruota

Wheelhouse cover

Couvre passage de roue



### Copripassaruota con anta in alluminio

Wheelhousecover with aluminium door

Couvre passages de roue avec porte en aluminium

### L507

Code	Dimension (LxHxD) mm	Weight (kg)
<b>010025086</b>	507X362X320	8
<b>010025087</b>	507X362X360	8,8
<b>010025088</b>	507X362X410	9
<b>010025089</b>	507X402X320	8,9
<b>010025090</b>	507X402X360	9,1
<b>010025091</b>	507X402X410	9,5
<b>010025092</b>	507X444X360	9,6
<b>010025093</b>	507X444X410	10
<b>010025094</b>	507X483X320	11,22
<b>010025095</b>	507X483X360	11,88
<b>010025096</b>	507X483X410	12,78

### L760

Code	Dimension (LxHxD) mm	Weight (kg)
<b>010025097</b>	760X362X320	9,4
<b>010025098</b>	760X362X360	9,7
<b>010025099</b>	760X362X410	10
<b>010025117</b>	760X402X320	10,1
<b>010025118</b>	760X402X360	10,5
<b>010025119</b>	760X402X410	11
<b>010025120</b>	760X444X360	11
<b>010025121</b>	760X444X410	11,27
<b>010025122</b>	760X483X320	12,81
<b>010025123</b>	760X483X360	13,47
<b>010025124</b>	760X483X410	14,37

### L1014

Code	Dimension (LxHxD) mm	Weight (kg)
<b>010025125</b>	1.014X362X320	13
<b>010025126</b>	1.014X362X360	13,3
<b>010025127</b>	1.014X362X410	13,5
<b>010025128</b>	1.014X402X320	13,5
<b>010025129</b>	1.014X402X360	13,9
<b>010025130</b>	1.014X402X410	14
<b>010025131</b>	1.014X444X360	13,8
<b>010025132</b>	1.014X444X410	14
<b>010025133</b>	1.014X483X320	15,42
<b>010025134</b>	1.014X483X360	16,08
<b>010025135</b>	1.014X483X410	16,98

### L1268

Code	Dimension (LxHxD) mm	Weight (kg)
<b>010025136</b>	1.268X362X320	14,4
<b>010025137</b>	1.268X362X360	14,8
<b>010025138</b>	1.268X362X410	15
<b>010025139</b>	1.268X402X320	14,8
<b>010025140</b>	1.268X402X360	15
<b>010025141</b>	1.268X402X410	15,2
<b>010025142</b>	1.268X444X360	15
<b>010025143</b>	1.268X444X410	15,3
<b>010025144</b>	1.268X483X320	18,63
<b>010025145</b>	1.268X483X360	19,29
<b>010025156</b>	1.268X483X410	20,19



TECNOLAM VAN

## Copripassaruota

Wheelhouse cover

Couvre passage de roue

### L1521

Code	Dimension (LxHxD) mm	Weight (kg)
<b>010025147</b>	1.521X362X320	15,3
<b>010025148</b>	1.521X362X360	15,4
<b>010025149</b>	1.521X362X410	15,5
<b>010025150</b>	1.521X402X320	15,4
<b>010025151</b>	1.521X402X360	15,6
<b>010025152</b>	1.521X402X410	16
<b>010025153</b>	1.521X444X360	16
<b>010025154</b>	1.521X444X410	16,3
<b>010025155</b>	1.521X483X320	20,74
<b>010025156</b>	1.521X483X360	21,4
<b>010025157</b>	1.521X483X410	22,3



TECNOLAM VAN

## Copripassaruota

Wheelhouse cover  
Couvre passage de roue



### Copripassaruota speciale con anta in alluminio

Special open wheelhouse cover whit aluminium door  
Couvre passage de roue ouvert special /porte aluminium

#### L507

Code	Dimension (LxHxD) mm	Weight (kg)
<b>010025855</b>	507X362X320	7,51
<b>010025826</b>	507X362X360	8,09
<b>010025831</b>	507X402X360	8,57
<b>010025836</b>	507X444X360	9,15
<b>010025806</b>	507X483X320	8,95
<b>010025841</b>	507X483X360	9,61

#### L760

Code	Dimension (LxHxD) mm	Weight (kg)
<b>010025856</b>	760X362X320	7,51
<b>010025827</b>	760X362X360	8,09
<b>010025832</b>	760X402X360	8,57
<b>010025837</b>	760X444X360	9,15
<b>010025807</b>	760X483X320	8,95
<b>010025842</b>	760X483X360	9,61

#### L1014

Code	Dimension (LxHxD) mm	Weight (kg)
<b>010025856</b>	1.014X362X320	9,51
<b>010025827</b>	1.014X362X360	0,09
<b>010025832</b>	1.014X402X360	10,57
<b>010025837</b>	1.014X444X360	11,15
<b>010025807</b>	1.014X483X320	10,95
<b>010025842</b>	1.014X483X360	11,61

#### L1268

Code	Dimension (LxHxD) mm	Weight (kg)
<b>010025858</b>	1.268X362X320	12,08
<b>010025829</b>	1.268X362X360	12,66
<b>010025834</b>	1.268X402X360	13,14
<b>010025839</b>	1.268X444X360	13,72
<b>010025809</b>	1.268X483X320	13,52
<b>010025844</b>	1.268X483X360	14,68

#### L1521

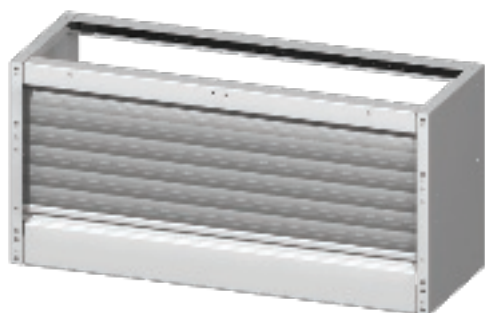
Code	Dimension (LxHxD) mm	Weight (kg)
<b>010025859</b>	1.521X362X320	13,47
<b>010025830</b>	1.521X362X360	14,05
<b>010025835</b>	1.521X402X360	14,53
<b>010025840</b>	1.521X444X360	15,11
<b>010025810</b>	1.521X483X320	14,91
<b>010025845</b>	1.521X483X360	15,57



TECNOLAM VAN

## Copripassaruota

Wheelhouse cover  
Couvre passage de roue



### Copripassaruota con serranda

Wheelhousecover with rolling shutter  
Couvre passage de roue avec rideau

### L507

Code	Dimension (LxHxD) mm	Weight (kg)
<b>010025066</b>	507X444X360	6
<b>010025067</b>	507X444X410	6,5
<b>010025001</b>	507X483X360	7,5
<b>010025069</b>	507X483X410	7,5

### L760

Code	Dimension (LxHxD) mm	Weight (kg)
<b>010025070</b>	760X444X360	7
<b>010025071</b>	760X444X410	7,5
<b>010025002</b>	760X483X360	8
<b>010025073</b>	760X483X410	8??

### L1014

Code	Dimension (LxHxD) mm	Weight (kg)
<b>010025074</b>	1.014X444X360	9,5
<b>010025075</b>	1.014X444X410	10
<b>010025003</b>	1.014X483X360	10,7
<b>010025077</b>	1.014X483X410	10,7

### L1268

Code	Dimension (LxHxD) mm	Weight (kg)
<b>010025078</b>	1.268X444X360	6
<b>010025079</b>	1.268X444X410	6,5
<b>010025004</b>	1.268X483X360	7,5
<b>010025081</b>	1.268X483X410	7,5

### L1521

Code	Dimension (LxHxD) mm	Weight (kg)
<b>010025082</b>	1.521X444X360	13,8
<b>010025083</b>	1.521X444X410	13,8
<b>010025005</b>	1.521X483X360	14,5
<b>010025085</b>	1.521X483X410	14,5

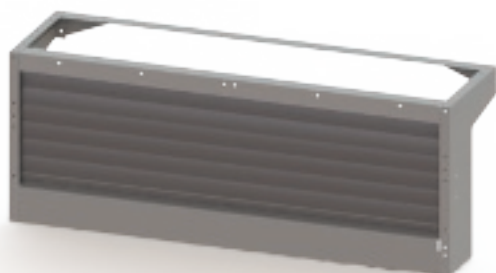


TECNOLAM VAN

## Copripassaruota

Wheelhouse cover

Couvre passage de roue



### Copripassaruota con serranda speciale

Special wheelhouse cover with rolling shutter

Couvre passage de roue special avec rideau

**Copripassaruota con serranda** composto da due fianchi, due triangoli di rinforzo, tre angolari, guide diritte, guide raggate, e serranda in alluminio.

**Wheelhouse cover with rolling shutter** is composed of two sides, two reinforcement triangles, three angles, right, curved slides and aluminium shutter.

**Le Couvre passage de roue avec rideau**, est composé par deux côtés, deux triangles de renfort, trois pieces angulaires, rails droites, rails à rayons, et rideau en alu.

### L507

Code	Dimension (LxHxD) mm	Weight (kg)
010025066	507X444X360	6
010025067	507X444X410	6,5
010025001	507X483X360	7,5
010025069	507X483X410	7,5

### L760

Code	Dimension (LxHxD) mm	Weight (kg)
010025070	760X444X360	7
010025071	760X444X410	7,5
010025002	760X483X360	8
010025073	760X483X410	8??

### L1014

Code	Dimension (LxHxD) mm	Weight (kg)
010025074	1.014X444X360	9,5
010025075	1.014X444X410	10
010025003	1.014X483X360	10,7
010025077	1.014X483X410	10,7

### L1268

Code	Dimension (LxHxD) mm	Weight (kg)
010025078	1.268X444X360	6
010025079	1.268X444X410	6,5
010025004	1.268X483X360	7,5
010025081	1.268X483X410	7,5

### L1521

Code	Dimension (LxHxD) mm	Weight (kg)
010025082	1.521X444X360	13,8
010025083	1.521X444X410	13,8
010025005	1.521X483X360	14,5
010025085	1.521X483X410	14,5

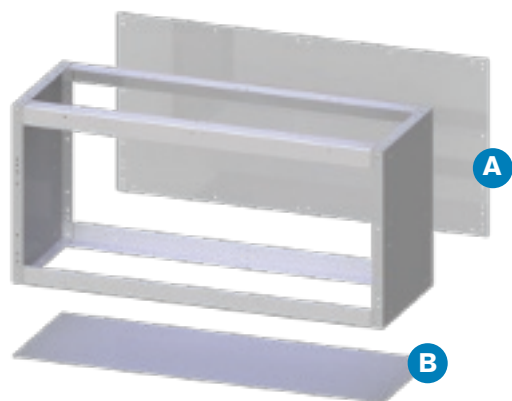


TECNOLAM VAN

## Copripassaruota

Wheelhouse cover

Couvre passage de roue



### Chiusura passaruota

Closing panel for wheelhouse cover

Fermeture pore couvre passage des roues

### Chiusura anteriore / posteriore per passaruota

Back-front closing panel for wheelhouse covers

Fermeture antérieure ou arrière du couvre passage de roue

### Chiusura superiore / inferiore per copri passaruota

Upper-lower closing panel for wheelhouse covers

Fermeture supérieure ou inférieure pour couvre passage des roue

**A**

Code	Dimension (LxHxD) mm	Weight (kg)
<b>TICP001036</b>	507X362	1,11
<b>TICP001040</b>	507X402	1,34
<b>TICP001044</b>	507X444	1,38
<b>TICP001048</b>	507X483	1,5
<b>TICP002036</b>	760X362	1,66
<b>TICP002040</b>	760X402	1,92
<b>TICP002044</b>	760X444	2,3
<b>TICP002048</b>	760X483	2,5
<b>TICP003036</b>	1.014X362	2,3
<b>TICP003040</b>	1.014X402	2,53
<b>TICP003044</b>	1.014X444	2,76
<b>TICP003048</b>	1.014X483	3,07
<b>TICP004036</b>	1.268X362	2,83
<b>TICP004040</b>	1.268X402	3,21
<b>TICP004044</b>	1.268X444	3,52
<b>TICP004048</b>	1.268X483	3,86
<b>TICP005036</b>	1.521X362	3,42
<b>TICP005040</b>	1.521X402	3,86
<b>TICP005044</b>	1.521X444	4,27
<b>TICP005048</b>	1.521X483	4,62

**B**

Code	Dimension (LxHxD) mm	Weight (kg)
<b>TICS001036</b>	507X360	1,14
<b>TICS001041</b>	507X410	1,31
<b>TICS002036</b>	760X360	1,68
<b>TICS002041</b>	760X410	1,96
<b>TICS003036</b>	1.014X360	2,28
<b>TICS003041</b>	1.014X410	2,65
<b>TICS004036</b>	1.268X360	2,89
<b>TICS004041</b>	1.268X410	3,35
<b>TICS005036</b>	1.521X360	3,24
<b>TICS005041</b>	1.521X410	4,08
<b>TICS001032</b>	507X320	1,04
<b>TICS002032</b>	760X320	1,47
<b>TICS003032</b>	1.014X320	2,03
<b>TICS004032</b>	1.268X320	2,52
<b>TICS005032</b>	1.521X320	3,02

## KIT Fermavaligie

Case-holder

Kit arrête-valises



Il kit va applicato all'interno dei copripassaruota aperti ed è composto da una navetta di bloccaggio, un contro fianco e una rotaia. La navetta permette di tenere bloccate le valigie al fianco del copripassaruota impedendone qualsiasi movimento. Il suo pregio è quello di poter alloggiare varie dimensioni di valigie.

The kit has to be assembled inside the open wheelhouse cover it's composed of a blocking-shuttle, a side and a rail.

The rail permits to keep the cases blocked against a side of the wheelhouse, avoiding them to move. It fits cases of different dimensions.

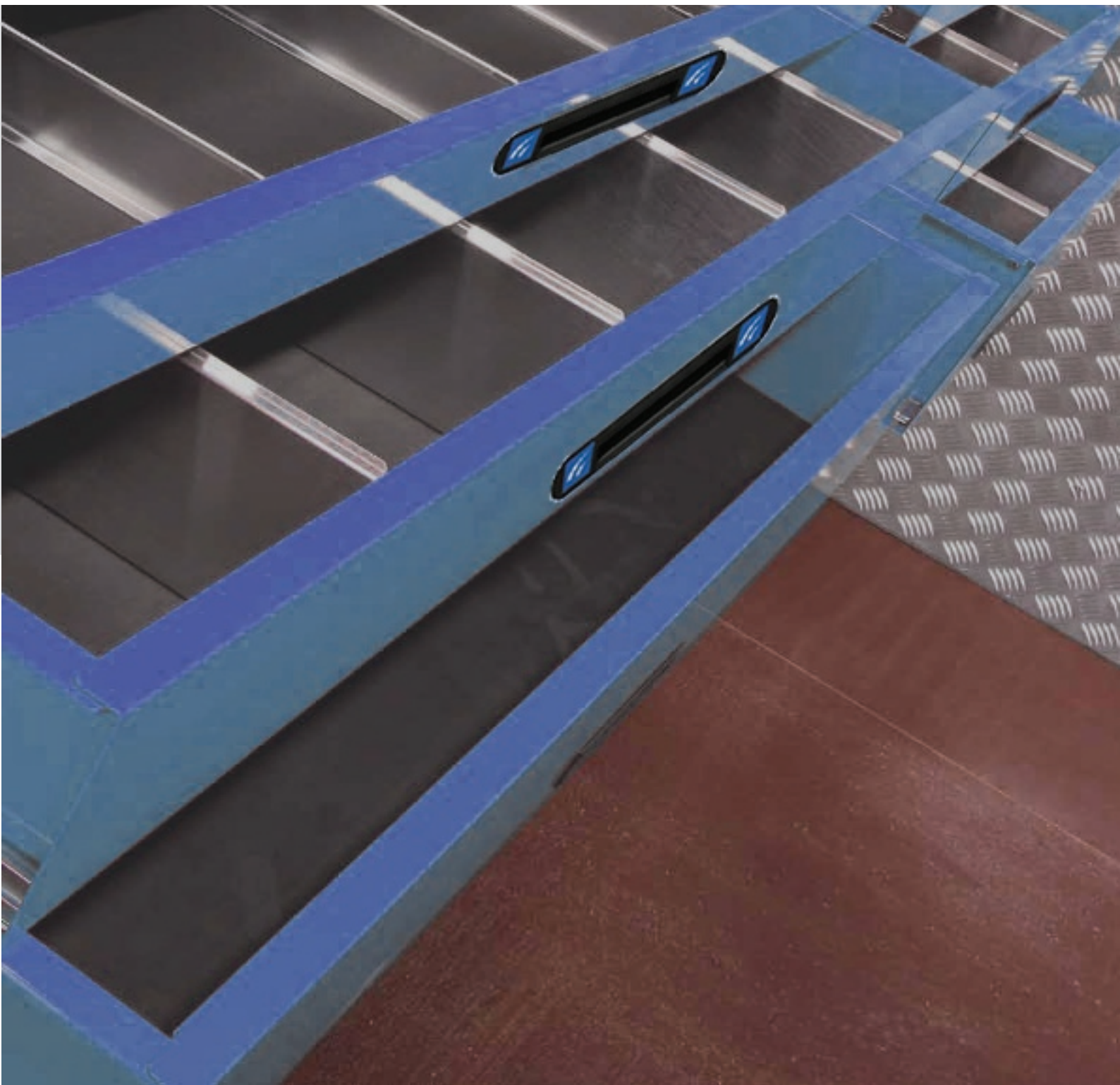
Le kit doit être appliqué à l'intérieur du couvre passage de roue ouvert, et il se compose d'une navette de blocage, d'un contre-côté et d'un rail. La navette vous permet de garder les mallettes verrouillées sur le côté du couvre passage de roue, empêchant tout mouvement. Il peut ranger mallettes de différentes tailles.

Code	Dimension (LxHxD) mm	Weight (kg)
<b>TAKFV004036</b>	1.268x 360	4,2
<b>TAKFV004041</b>	1.268x 410	4,5
<b>TAKFV005036</b>	1.521x360	4,7
<b>TAKFV005041</b>	1.521x 410	5
<b>TAKFV002036</b>	760x 360	3,2
<b>TAKFV002041</b>	760x410	3,5
<b>TAKFV003036</b>	1.014x360	3,7
<b>TAKFV003041</b>	1.014x 410	4





**Cassettiere**  
Chests of drawers  
Blocs à tiroirs





TECNOLAM VAN

## Cassettiere

Chest of drawers

Blocs à tiroirs

Le cassettiere Tecnomlam sono state progettate per l'arredamento dei furgoni, quindi come principali caratteristiche costruttive hanno: robustezza, leggerezza, intercambiabilità dei cassetti, guide ad estrazione totale e doppia chiusura del cassetto per garantire la massima sicurezza in movimento. Le cassettiere Tecnomlam offrono la possibilità di avere delle combinazioni di soli cassetti, di soli vassoi con valigie estraibili o combinazioni di cassetti e vassoi valigie. Le cassettiere Tecnomlam con cassetti sono disponibili in tre larghezze 507-760-1014 due altezze 241-483 e due profondità 360-410. I cassetti sono disponibili in tre larghezze 507-760-1014 mm e in quattro altezze 66-100-130-200mm e dotati di chiusura centrale per un miglior serraggio e sono muniti di tappetino antiolio, antivibrazione e divisori interni. Essi possono essere smontati facilmente in modo tale da poter variare la composizione ogni qual volta si voglia.

Tecnomlam chests of drawers have been designed for van equipment, therefore their main characteristics are: strength, lightness, drawers interchangeability, total extraction slide and double locked drawers ensure the maximum safety during movement. Tecnomlam chests of drawers offer the possibility to have combinations of drawers only, trays with portable cases only, or finally combinations of drawers and trays with cases. Tecnomlam chests of drawers are available in three widths 507-760-1014 two heights 241-483 and two depths 360-410. Drawers are available in three widths 507-760-1014 mm and four heights 66-100-130-200mm, they are provided with central lock anti-oil and anti-vibration carpets and internal dividers. They can be easily removed in Tecnomlam to change and vary the composition at any time.

Les blocs à tiroirs Tecnomlam sont conçus pour l'aménagement de véhicules. Les principales caractéristiques constructives sont: robustesse, légèreté, intercambiabilité des tiroirs, glissières à extraction totale et double fermeture du tiroir pour assurer la sécurité maximale en mouvement. Les blocs à tiroirs Tecnomlam offrent la possibilité d'avoir des combinaisons de seuls tiroirs, de seuls plateaux avec valises amovibles ou des combinaisons de tiroirs, plateaux et valises. Les blocs à tiroirs Tecnomlam sont disponibles en trois largeurs 507-760-1014 mm, deux hauteurs 241-483 mm et deux profondeurs 360-410 mm. Les tiroirs sont disponibles en trois largeurs 507-760-1014 mm et quatre hauteurs 66-100-130-200mm et sont équipés avec fermeture centrale pour un meilleur serrage avec tapis anti-huile et antivibrations; et séparateurs intérieurs. Ils peuvent être démontés facilement de sorte que vous pouvez varier la composition chaque fois que vous voulez.





TECNOLAM VAN

## Cassettiere

Chest of drawers

Blocs à tiroirs



Le guide dei cassetti sono a sfera ad estrazione totale, questo permette una apertura totale del cassetto.

La portata delle guide e' di kg.60, Nei cassetti con altezza 130mm e 200mm e' possibile installare due coppie di guide, aumentando la portata dei cassetti fino a 90 kg.

The drawers have ball guides with total extraction, this allows a total opening of the drawer.

The capacity of the guides is 60kg. In drawers height 130mm and 200mm is possible to install two couples of guides increasing the capacity of the drawers up till 90kg.

Les rails des tiroirs sont à boule à extraction totale, ça permet une ouverture totale du tiroir.

Le débit des rails est de kg 60. Dans les tiroirs hauteur 130mm et 200mm est possible installer deux couples de rails, en augmentant le débit des tiroirs jusqu'à 90 kg.

**Cassettiere con cassetti**

Chests of drawers with drawers

Blocs à tiroirs avec tiroirs

○ **507x483x360**

△ **507x483x410**



1 CASS. H200, 2 CASS.H100  
1 DRAWER H200 2 DRAWERS H100,  
1 BLOC A' TIROIR H200, 1 BLOCS A'  
TIROIR H100

Code	Weight (kg)
------	-------------

○ **010026101**  
△ **010026086**

24-26



2 CASS.H200  
2 DRAWERS H200  
2 BLOCS TIROIR H200

Code	Weight (kg)
------	-------------

○ **010026093**  
△ **010026094**

21-24



1 CASS. H66, 2 CASS. H100, 1 CASS. H130  
1 DRAWER H66, 2 DRAWERS H100,  
1 DRAWER H130  
1 BLOC A' TIROIR H66, 2 BLOC A' TIROIR H100,  
1 BLOC A' TIROIR H130

Code	Weight (kg)
------	-------------

○ **010026102**  
△ **010026088**

22-24



3 CASS.H 66, 1 CASS.H200  
3 DRAWERS H66, 1 DRAWER H200  
3 BLOCS A' TIROIR H66, 1 BLOCS A'  
TIROIR H200

Code	Weight (kg)
------	-------------

○ **010026095**  
△ **010026096**

28-30



2 CASS. H66, 2 CASS. H130  
WITH 2 DRAWERS H66,  
2 DRAWERS H130  
2 BLOCS A' TIROIR H66, 2 BLOCS A'  
TIROIR H130

Code	Weight (kg)
------	-------------

○ **010026089**  
△ **010026090**

26-28



3 CASS. H66, 2 CASS.H100  
3 DRAWERS H66, 2 DRAWERS H100,  
3 BLOCS A' TIROIR H66, 2 BLOC A'  
TIROIR H100

Code	Weight (kg)
------	-------------

○ **010026097**  
△ **010026098**

29-31



1 CASS.H66, 1 CASS.H130,  
1 CASS.H200  
WITH 1 DRAWER H66, 1 DRAWER  
H130, 1 DRAWER H200  
AVEC 1 BLOC TIROIR H66, 1 BLOC  
TIROIR H130, 1 BLOC TIROIR H200

Code	Weight (kg)
------	-------------

○ **010026091**  
△ **010026092**

24-26



4 CASS. H100  
WITH 4 DRAWERS H100  
AVEC 4 BLOCS A' TIROIR H100

Code	Weight (kg)
------	-------------

○ **010026111**  
△ **010026112**

22-24



TECNOLAM VAN

## Cassettiere

Chest of drawers

Blocs à tiroirs



6 CASS. H66  
6 DRAWERS H66  
6 BLOCS A' TIROIR H66

Code	Weight (kg)
------	-------------

- **010026113** 27-29
- △ **010026114**



4 CASS. H66, 1 CASS. H130  
4 DRAWERS H66, 1 DRAWER H130  
4 BLOCS TIROIR H66,  
1 BLOC TIROIR H130

Code	Weight (kg)
------	-------------

- **010026093** 28-30
- △ **010026094**



3 CASS. H130  
3 DRAWERS H130  
3 BLOCS TIROIR H130

Code	Weight (kg)
------	-------------

- **010026115** 22-24
- △ **010026116**

## Cassettiere con cassetti

Chests of drawers with drawers

Blocs à tiroirs avec tiroirs

○ **507x241x360**

△ **507x241x410**



1 CASS. H200  
1 DRAWER H200,  
1 BLOC A' TIROIR H200

Code	Weight (kg)
------	-------------

- **010026302** 12-14
- △ **010026118**



1 CASS. H66, 1 CASS. H 130  
1 DRAWER H66, 1 DRAWER H130  
1 BLOC A' TIROIR H66, 1 BLOC A' TIROIR H130

Code	Weight (kg)
------	-------------

- **010026121** 14-16
- △ **010026122**



2 CASS. H100  
2 DRAWERS H100,  
2 BLOCS A' TIROIR H100

Code	Weight (kg)
------	-------------

- **010026301** 24-26
- △ **010026120**



3 CASS. H66  
3 DRAWERS H66  
3 BLOCS A' TIROIR H66

Code	Weight (kg)
------	-------------

- **010026123** 15-17
- △ **010026124**

**Cassettiere con cassetti**

Chests of drawers with drawers

Blocs à tiroirs avec tiroirs

○ **760x483x360**

△ **507x483x410**



1 CASS. H200, 2 CASS. H100  
1 DRAWER H200, 2 DRAWERS H100  
1 BLOC A' TIROIR H200, 2 BLOCS A' TIROIR H100

Code	Weight (kg)
○ <b>010026402</b>	23-25
△ <b>010026126</b>	



4 CASS. H100  
4 DRAWERS H100  
4 BLOCS A' TIROIR H100

Code	Weight (kg)
○ <b>010026135</b>	27-29
△ <b>010026136</b>	



1 CASS. H66, 1 CASS. H130, 1 CASS. H200  
1 DRAWER H66, 1 DRAWER H130, DRAWERS 200  
1 BLOC A' TIROIR H66, 1 BLOC A' TIROIR H130, 1 BLOC A' TIROIR H200

Code	Weight (kg)
○ <b>010026127</b>	23-25
△ <b>010026128</b>	



4 CASS. H66, 1 CASS. H130  
4 DRAWERS H66, 1 DRAWER H200  
4 BLOCS A' TIROIR H66, 1 BLOC A' TIROIR H200

Code	Weight (kg)
○ <b>010026401</b>	27-29
△ <b>010026134</b>	



2 CASS. H66, 2 CASS. H130  
2 DRAWERS H66, 2 DRAWERS H130  
2 BLOCS A' TIROIR H66, 2 BLOCS A' TIROIR H130

Code	Weight (kg)
○ <b>010026129</b>	24-26
△ <b>010026130</b>	



1 CASS. H66, 2 CASS. H100, 1 CASS. H130  
1 DRAWER H66, 2 DRAWERS H100, 1 DRAWER H130,  
1 BLOC A' TIROIR H66, 2 BLOCS A' TIROIR H100, 1 BLOC A' TIROIR H130

Code	Weight (kg)
○ <b>010026403</b>	21-23
△ <b>010026138</b>	



3 CASS. H66, 1 CASS. H200  
3 DRAWERS H66, 1 DRAWER H200  
3 BLOCS A' TIROIR H66, 1 BLOC A' TIROIR H200

Code	Weight (kg)
○ <b>010026131</b>	24-26
△ <b>010026132</b>	



2 CASS. H200,  
2 DRAWERS H200,  
2 BLOCS A' TIROIR H200

Code	Weight (kg)
○ <b>010026139</b>	21-23
△ <b>010026140</b>	



TECNOLAM VAN

### Cassettiere

Chests of drawers

Blocs à tiroirs



3 CASS. H130,  
3 DRAWERS H130,  
3 BLOCS A' TIROIR H130,

	Code	Weight (kg)
○	<b>010026141</b>	22-24
△	<b>010026142</b>	



4 CASS. H66, 1 CASS. H130  
4 DRAWERS H66, 1 DRAWER H130  
4 BLOCS A' TIROIR H66, 1 BLOC A' TIROIR H130

	Code	Weight (kg)
○	<b>010026145</b>	27-28
△	<b>010026146</b>	



3 CASS. H66, 2 CASS. H100  
3 DRAWERS H66, 2 DRAWERS H100  
3 BLOCS A' TIROIR H66, 2 BLOCS A' TIROIR H100

	Code	Weight (kg)
○	<b>010026143</b>	25-27
△	<b>010026144</b>	

### Cassettiere con cassetti

Chests of drawers with drawers

Blocs à tiroirs avec tiroirs

○ **760x241x360**

△ **507x241x410**



1 CASS. H200,  
1 DRAWER H200,  
1 BLOCS A' TIROIR H200

	Code	Weight (kg)
○	<b>010026502</b>	13-15
△	<b>010026147</b>	



1 CASS. H66, 1 CASS. H130  
1 DRAWER H66, 1 DRAWER H130,  
1 BLOCS A' TIROIR H66, 1 BLOCS A' TIROIR H130

	Code	Weight (kg)
○	<b>010026149</b>	14-15
△	<b>010026150</b>	



2 CASS. H100  
2 DRAWER H100,  
2 BLOCS A' TIROIR H100

	Code	Weight (kg)
○	<b>010026501</b>	13-15
△	<b>010026148</b>	



3 CASS. H66,  
3 DRAWERS H66,  
3 BLOCS A' TIROIR H66

	Code	Weight (kg)
○	<b>010026151</b>	13-15
△	<b>010026152</b>	

**Cassettiere con cassetti**

Chests of drawers with drawers

Blocs à tiroirs avec tiroirs

○ **1014x483x360**

△ **1014x483x410**



1 CASS. H66, 1 CASS. H130, 1 CASS. H200  
1 DRAWER H66, 1 DRAWER H130,  
1 DRAWER H200  
1 BLOC A' TIROIR H66, 1 BLOC A' TIROIR  
H130, 1 BLOC A' TIROIR H130



6 CASS. H66,  
6 DRAWERS H66,  
6 BLOCS A' TIROIR H66

Code	Weight (kg)
○ <b>010026153</b>	14-15
△ <b>010026154</b>	

Code	Weight (kg)
○ <b>010026161</b>	50-52
△ <b>010026162</b>	



2 CASS. H66, 2 CASS. H130  
2 DRAWERS H66, 2 DRAWERS H130,  
2 BLOCS A' TIROIR H66, 2 BLOCS A' TIROIR  
H130



1 CASS. H66, 2 CASS. H100, 1 CASS. H130  
1 DRAWER H66, 1 DRAWERS H100,  
1 DRAWER H130  
1 BLOC A' TIROIR H66, 2 BLOCS A' TIROIR  
H100, 1 BLOC A' TIROIR H130

Code	Weight (kg)
○ <b>010026155</b>	38-40
△ <b>010026156</b>	

Code	Weight (kg)
○ <b>010026163</b>	14-16
△ <b>010026164</b>	



3 CASS. H66, 2 CASS. H100  
3 DRAWERS H66, 2 DRAWERS H100  
3 BLOCS A' TIROIR H66, 2 BLOCS A'  
TIROIR H100



2 CASS. H200,  
2 DRAWERS H200  
2 BLOCS A' TIROIR H200

Code	Weight (kg)
○ <b>010026157</b>	46-48
△ <b>010026158</b>	

Code	Weight (kg)
○ <b>010026165</b>	35-37
△ <b>010026166</b>	



4 CASS. H100  
WITH 4 DRAWERS H100  
AVEC 4 BLOCS A' TIROIR H100



3 CASS. H66, 1 CASS. H200  
3 DRAWERS H66, 1 CASS. H200  
3 BLOCS A' TIROIR H66, 1 BLOCS A' TIROIR  
H200

Code	Weight (kg)
○ <b>010026159</b>	50-52
△ <b>010026160</b>	

Code	Weight (kg)
○ <b>010026167</b>	43-45
△ <b>010026168</b>	



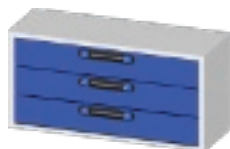


TECNOLAM VAN

### Cassettiere

Chests of drawers

Blocs à tiroirs



3 CASS. H130,  
3 DRAWERS H130,  
3 BLOCS A' TIROIR H130

Code	Weight (kg)
○ <b>010026169</b>	39-41
△ <b>010026170</b>	



4 CASS. H66, 1 CASS. H130  
4 DRAWERS H66, 1 DRAWER H130  
4 BLOCS A' TIROIR H66, 1 BLOCS A' TIROIR H130

Code	Weight (kg)
○ <b>010026171</b>	37-38
△ <b>010026172</b>	

### Cassettiere con **cassetti**

Chests of drawers with drawers

Blocs à tiroirs avec tiroirs

○ **1014x241x360**

△ **1014x241x410**



1 CASS. H200,  
1 DRAWER H200,  
1 BLOCS A' TIROIR H200

Code	Weight (kg)
○ <b>010026173</b>	21-23
△ <b>010026174</b>	



1 CASS. H66, 1 CASS. H130  
1 DRAWER H66, 1 DRAWER H130,  
1 BLOC A' TIROIR H66, 1 BLOC A' TIROIR H130

Code	Weight (kg)
○ <b>010026177</b>	24-26
△ <b>010026178</b>	



2 CASS. H100  
2 DRAWERS H100,  
2 BLOCS A' TIROIR H100

Code	Weight (kg)
○ <b>010026175</b>	24-25
△ <b>010026176</b>	



3 CASS. H66,  
3 DRAWERS H66,  
3 BLOCS A' TIROIR H66,

Code	Weight (kg)
○ <b>010026179</b>	28-30
△ <b>010026180</b>	



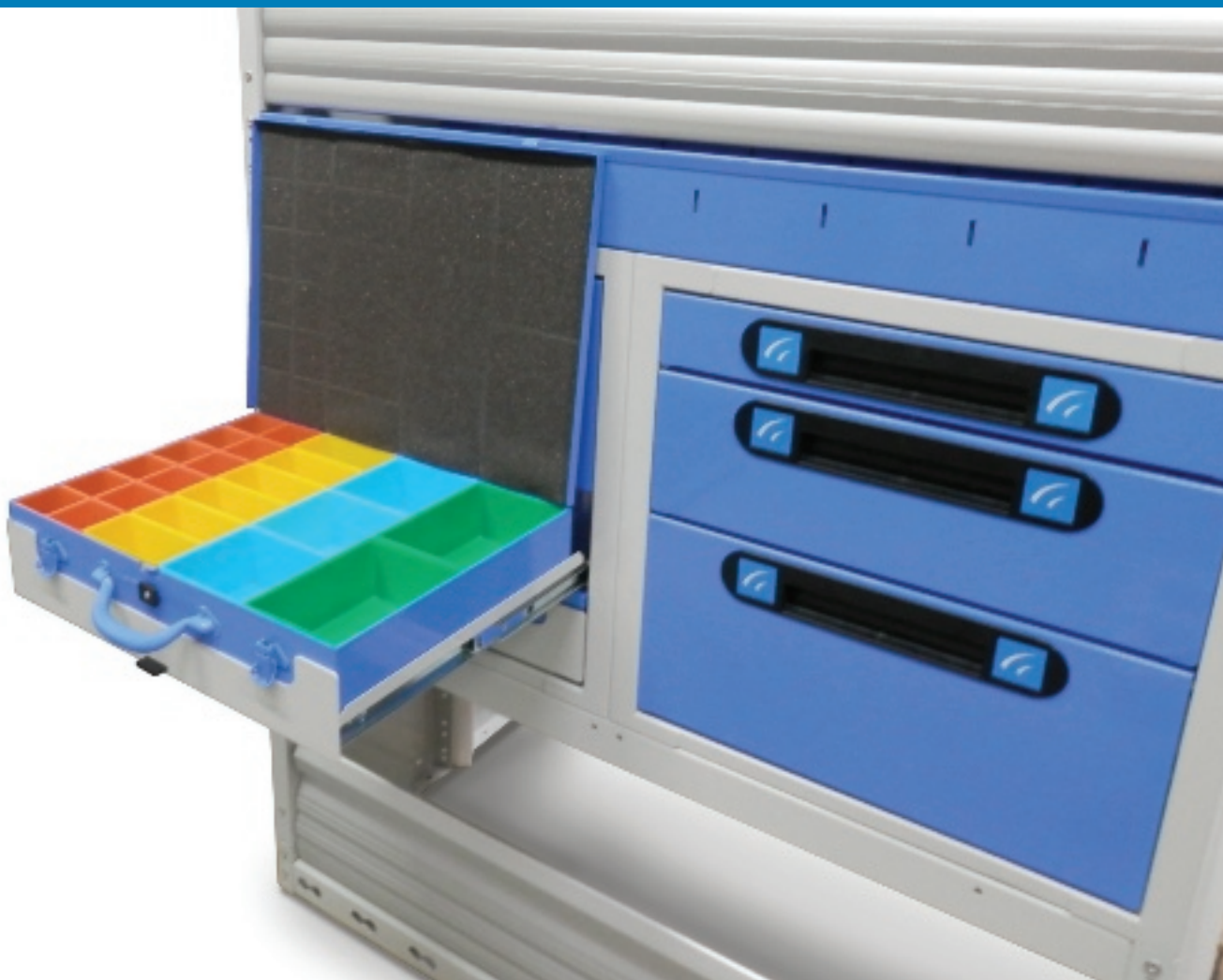
TECNOLAM VAN

## Cassettiere con valigie

Chests of drawers with trays and cases  
Blocs à tiroirs avec plateaux e mallettes

### Cassettiere con valigie

Chests of drawers with trays and cases  
Bloc à tiroirs avec plateaux et mallettes



Le cassettiere con vassoi e valigie sono disponibili, in due larghezze 507-1014 mm, in due altezze 241-483 e in due profondità 360-410 e possono avere un minimo di N. 2 vassoi e un max. di N. 4 vassoi. Essi sono realizzati completamente in acciaio alleggerito, per garantire robustezza e leggerezza allo stesso tempo. Le guide sono a sfere ad estrazione totale per asportare senza problemi la valigia riposta sul vassoio. La chiusura del vassoio è sempre centrale per garantire un buon fissaggio del carico. Il vassoio da 1014 è in grado di contenere al suo interno due valigie.

Chests of drawers with trays and cases are available in the following dimensions: 507-1014 mm wide, 241-483 high and 360-410 deep and they can have from a minimum of 2 to a maximum of 4 trays. They are entirely made of lightened steel, in order to guarantee strength and lightness at the same time. Slides are all spherical for a total extraction in order to take away cases placed on the trays easily. The lock of the tray is always in the middle in order to guarantee a good cargo fixing. The 1014 tray can house two cases.

Les blocs à tiroirs avec plateaux et mallettes sont disponibles en deux largeurs 507-1014 mm, en deux hauteurs 241-483 et deux profondeurs 360-410 mm et peuvent avoir un minimum de N. 2 plateaux et un max. de N. 4 plateaux. Ils sont entièrement réalisés en acier léger, pour assurer solidité et légèreté au même temps. Les glissières sont à billes à pleine extraction pour enlever en toute sécurité la mallette placée sur le plateau. La fermeture du plateau est toujours centrale pour assurer une bonne fixation du charge. Le plateau en 1014 mm peut contenir deux mallettes à l'intérieur.

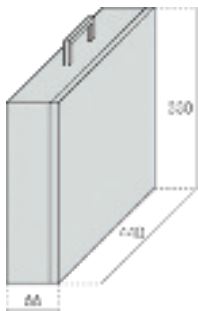


TECNOLAM VAN

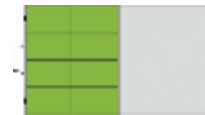
## Cassettiere con valigie

Chests of drawers with trays and cases

Blocs à tiroirs avec plateaux e malles



010043001



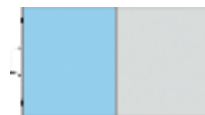
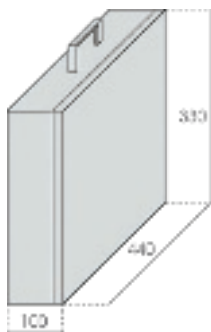
010043023



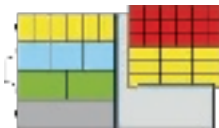
010043007

### Valigie H66 / Cases H66 / Mallettes H66

Code	N. vaschette N. boxes N. bacs	N. vaschette in plastica N. plastic boxes N. bacs en plastique	Weight (kg)
<b>010043001</b>			3,11
<b>010043023</b>	8		3,75
<b>010043007</b>	23		4



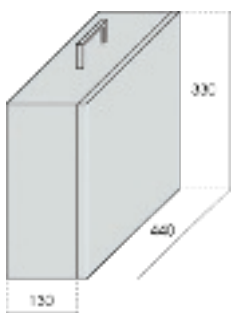
010044001



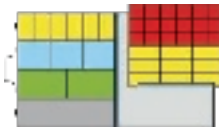
010044008

### Valigie H100 / Cases H100 / Mallettes H100

Code	N. vaschette N. boxes N. bacs	N. vaschette in plastica N. plastic boxes N. bacs en plastique	Weight (kg)
<b>010044001</b>			3,4
<b>010044028</b>	38	1	4,66



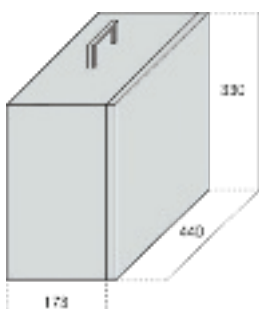
010045001



01004500

### Valigie H130 / Cases H130 / Mallettes H130

Code	N. vaschette N. boxes N. bacs	N. vaschette in plastica N. plastic boxes N. bacs en plastique	Weight (kg)
<b>010045001</b>			3,8
<b>010045005</b>	46	1	5,36



010046001

### Valigie H173 / Cases H173 / Mallettes H173

Code	Weight (kg)
<b>010046001</b>	4

**Cassettiere**

Chests of drawers

Blocs à tiroirs

**Cassettiere con vassoi e valigie**

Chests of drawers with tray &amp; cases

Blocs à tiroirs avec plateaux et mallettes

○ **507x483x360**△ **507x483x410**

2 VASSOI 2 VALIGIE 17300  
 2 TRAYS 2 CASES 17300  
 2 PLATEAUX 2 MALLETTES 17300

Code	Weight (kg)
○ <b>010026010</b>	20-22
△ <b>010026011</b>	



3 VASSOI 1 VALIGIA 6623,  
 1 VALIGIA 10040, 1 VALIGIA H130  
 3 TRAYS 1 CASE 6623, 1 CASE 10040, 1 CASE 130  
 3 PLATEAUX 1 MALLETTE 6623,  
 1 MALLETTE 100400, 1 MALLETTE H130

Code	Weight (kg)
○ <b>010026003</b>	24-26
△ <b>010026016</b>	



3 VASSOI 1 VALIGIA 10040,  
 2 VALIGIE 10039  
 3 TRAYS 1 CASE 10040 , 2 CASES 10039  
 3 PLATEAUX 1 MALLETTE 10040,  
 2 MALLETTES 10039

Code	Weight (kg)
○ <b>010026002</b>	25-27
△ <b>010026013</b>	



3 VASSOI, 2 VALIGIE 6623,  
 1 VALIGIA 17300  
 3 TRAYS 1 CASE 6623, 2 CASES 17300  
 3 PLATEAUX 1 MALLETTE 6623,  
 2 MALLETTES 17300

Code	Weight (kg)
○ <b>010026017</b>	25-27
△ <b>010026012</b>	



3 VASSOI, 2 VALIGIE 6623,  
 1 VALIGIA 10039  
 3 TRAYS 1 CASE 10040, 2 CASES 10039  
 3 PLATEAUX 1 MALLETTE 10040,  
 2 MALLETTES 10039

Code	Weight (kg)
○ <b>010026014</b>	24-26
△ <b>010026015</b>	



4 VASSOI 4 VALIGIE 6623  
 4 TRAYS 4 CASES 6623  
 4 PLATEAUX 4 CAS 6623

Code	Weight (kg)
○ <b>010026001</b>	29-31
△ <b>010026018</b>	

**Cassettiere con vassoi e valigie**

Chests of drawers with tray &amp; cases

Blocs à tiroirs avec plateaux et mallettes

○ **507x241x360**△ **507x241x410**

1 VASSOIO 1 VALIGIA 17300  
 1 TRAY 1 CASE 17300  
 1 PLATEAUX 1 CAS 17300

Code	Weight (kg)
○ <b>010026019</b>	12-14
△ <b>010026020</b>	



CON 2 VASSOI 2 VALIGIE 6623  
 WITH 2 TRAYS 2 CASES 6623  
 AVEC 2 PLATEAUX 2 CAS 6623

Code	Weight (kg)
○ <b>010026201</b>	17-18
△ <b>010026020</b>	

**Cassettiere con vassoi e valigie**

Chests of drawers with tray &amp; cases

Blocs à tiroirs avec plateaux et mallettes

○ **1014x483x360**△ **1014x483x410**

2 VASSOI 4 VALIGIE 17300  
2 TRAYS , 4 CASE 17300,  
2 PLATEAUX ,4 MALLETTES 17300

Code	Weight (kg)
------	-------------

○ **010026181** 36-38  
△ **010026182**



3 VASSOI, 2 VALIGIE 6623, 2 VALIGIE 10048,  
2 VALIGIE 13046,  
3 TRAYS,2 CASES 6623, 2 CASES 10048,  
2 CASES 13046,  
3 PLATEAUX ,2 MALLETTES 6623, 2 MALLETTES  
10048, 2 MALLETTES 13046,

Code	Weight (kg)
------	-------------

○ **010026187** 53-55  
△ **010026188**



3 VASSOI, 6 VALIGIE 10039,  
3 TRAYS,6 CASES 10039,  
3 PLATEAUX ,6 MALLETTES 10039

Code	Weight (kg)
------	-------------

○ **010026183** 36-38  
△ **010026184**



3 VASSOI, 4 VALIGIE 6623, 2 VALIGIE 13046,  
3 TRAYS,4 CASES 6623, 2 CASES 13046  
3 PLATEAUX ,4 MALLETTES 6623,  
2 MALLETTES 13046

Code	Weight (kg)
------	-------------

○ **010026189** 53-55  
△ **010026190**



3 VASSOI, 4 VALIGIE 6623, 2 VALIGIE 17300  
3 TRAYS,4 CASES 6623, 2 CASES 17300  
3 PLATEAUX ,4 MALLETTES 6623,  
2 MALLETTES 17300

Code	Weight (kg)
------	-------------

○ **010026185** 49-52  
△ **010026186**



4 VASSOI, 4 VALIGIE 6623, 4 VALIGIE 6623,  
4 TRAYS,4 CASES 6623, 4 CASES 6623  
4 PLATEAUX ,4 MALLETTES 6623,  
2 MALLETTES 6623

Code	Weight (kg)
------	-------------

○ **010026191** 61-64  
△ **010026192**

**Cassettiere con vassoi e valigie**

Chests of drawers with tray &amp; cases

Blocs à tiroirs avec plateaux et mallettes

○ **1014x241x360**△ **1014x241x410**

1 VASSOIO 2 VALIGIE 17300  
1 TRAY , 2 CASE 17300,  
1 PLATEAU ,2 MALLETTES 17300

Code	Weight (kg)
------	-------------

○ **010026193** 21-23  
△ **010026190**



2 VASSOI, 4 VALIGIE 6623,  
2 TRAYS,4 CASES 6623, ,  
2 PLATEAUX ,4 MALLETTES 6623

Code	Weight (kg)
------	-------------

○ **010026195** 33-35  
△ **010026196**

**Cassettiere con cassetti e valigie**

Chests of drawers with tray & cases

Blocs à tiroirs avec tiroirs et plateaux pour mallettes

○ **507x483x360**

△ **507x483x410**



1 VASSOIO 1 VALIGIA 10039 2 CASS.H100  
1 CASS.H66  
1 TRAY 1 CASE 10039 2 DRAWERS H100,  
1 DRAWERS H66  
1 PLATEAU, 1 MALLETTE 10039, 2 BLOCS A TIROIR  
H 100, 1 BLOC A TIROIR H66

	Code	Weight (kg)
○	<b>010026021</b>	24-26
△	<b>010026022</b>	



1 VASSOIO 1 VALIGIA 10040 2 CASS.H 130  
1 TRAY 1 CASE 10039 2 DRAWERS H130  
1 PLATEAU, 1 MALLETTE 10040,  
2 BLOCS A TIROIR H 130

	Code	Weight (kg)
○	<b>010026031</b>	23-25
△	<b>010026032</b>	



1 VASSOIO 1 VALIGIA 10039 4 CASS. H66  
1 TRAY 1, CASE 10036, 4 DRAWERS H66  
1 PLATEAU, 1 MALLETTE 10040,  
4 BLOCS A TIROIR H 66

	Code	Weight (kg)
○	<b>010026023</b>	20-22
△	<b>010026024</b>	



1 VASSOIO 1 VALIGIA 1300 1 CASS.H 100,  
1 CASS.H130  
1 TRAY, 1 CASE 1300 1 DRAWER H100,  
1 DRAWER H130  
1 PLATEAU, 1 MALLETTE 1300, 1 BLOC A TIROIR  
H100, 1 BLOC A TIROIR H130

	Code	Weight (kg)
○	<b>010026033</b>	23-25
△	<b>010026034</b>	



1 VASSOIO 1 VALIGIA 17300 1 CASS. H200  
1 TRAY, 1 CASE 17300 1 DRAWER H200  
1 PLATEAU, 1 MALLETTE 17300,  
1 BLOC A TIROIR H 200

	Code	Weight (kg)
○	<b>010026025</b>	20-22
△	<b>010026026</b>	



1 VASSOIO 1 VALIGIA 17300 2 CASS.H 100  
1 TRAY 1 CASE 17300 2 DRAWERS H100,  
1 PLATEAU, 1 MALLETTE 17300,  
2 BLOCS A TIROIR H 100

	Code	Weight (kg)
○	<b>010026035</b>	24-26
△	<b>010026036</b>	



1 VASSOIO 1 VALIGIA 6623 1 CASS. H66  
1 CASS H100 1 CASS H130  
1 TRAY, 1 CASE 6623 1 DRAWER H100,  
1 DRAWER H100, DRAWER H 130  
1 PLATEAU, 1 MALLETTE 6623, 1 BLOC A TIR. H100,  
1 BLOC A TIR. H100, BLOC A TIR. H 130

	Code	Weight (kg)
○	<b>010026027</b>	27-29
△	<b>010026028</b>	



1 VASSOIO 1 VALIGIA 6623 2 CASS.H 100,  
1 CASS H66  
1 TRAY 1 CASE 6623 2 DRAWERS H100,  
1 DRAWER H66  
1 PLATEAU, 1 MALLETTE 6623, 2 BLOCS A TIROIR  
H 100, 1 BLOC A TIROIR H66

	Code	Weight (kg)
○	<b>010026037</b>	24-26
△	<b>010026038</b>	



1 VASSOIO 1 VALIGIA 6623 1 CASS. H100  
1 CASS. H200  
1 TRAY 1 CASE 6623 1 DRAWER H100  
1 DRAWER H200  
1 PLATEAU 1 MALLETTE 6623, 1 BLOC A TIROIR  
H100, 1 BLOC A TIROIR H200

	Code	Weight (kg)
○	<b>010026029</b>	24-26
△	<b>010026030</b>	



1 VASSOIO 1 VALIGIA 6623 3 CASS.H 100  
1 TRAY 1 CASE 6623 3 DRAWERS H100,  
1 PLATEAU 1 MALLETTE 6623,  
3 BLOCS A TIROIR H 100

	Code	Weight (kg)
○	<b>010026039</b>	26-28
△	<b>010026040</b>	

**Cassettiere con cassetti e valigie**

Chests of drawers with tray & cases

Blocs à tiroirs avec tiroirs et plateaux pour mallettes

○ **507x483x360**

△ **507x483x410**



2 VASSOI 1 VALIGIA 10039 1 VALIGIA 13000  
1 CASS. H 100  
2 TRAYS 1 CASE 10039 1 CASE 13000  
1 DRAWER H 100  
AVEC 1 PLATEAUX, 1 MALLETTE 10040, 1 MALLETTE  
13000, 1 BLOC A' TIROIR H100

Code

Weight (kg)

○ **010026041**

26-28

△ **010026042**



2 VASSOI 1 VALIGIA 6623 1 VALIGIA 10040,  
1 CASS.H 66, CASS.H 100  
WITH 2 TRAYS ,1 CASE 6623, 1 CASE 10040,  
1 DRAWER H 66 , DRAWER H100  
AVEC 2 PLATEAUX, 1 MALLETTE 6623, 1 MALLETTE  
10040, 1 BLOC TIROIR H66, 1 BLOC TIROIR H100

Code

Weight (kg)

○ **010026051**

24-26

△ **010026052**



2 VASSOI 1 VALIGIA 6623 1 VALIGIA 13000,  
2 CASS H66  
2 TRAYS 1 CASE 6623 1 CASE 1300,  
2 DRAWERS H66  
2 PLATEAUX 1 MALLETTE 6623, 1 MALLETTE  
13000, 2 BLOCS A' TIROIR H66

Code

Weight (kg)

○ **010026043**

23-25

△ **010026044**



2 VASSOI, 2 VALIGIE 10039 2 CASS.H 66  
2 TRAYS 2 CASES 10039 2 DRAWERS H66  
2 PLATEAUX 2 MALLETES 10039,  
2 BLOCS TIROIR H66

Code

Weight (kg)

○ **010026053**

25-27

△ **010026054**



2 VASSOI 2 VALIGIE 10039 1 CASS. H130  
2 TRAYS 2 CASE 10039 1 DRAWER H130  
2 PLATEAUX, 2 MALLETES 10040, 1 BLOC A'  
TIROIR H130

Code

Weight (kg)

○ **010026045**

24-25

△ **010026046**



2 VASSOI 2 VALIGIE 13000 1 CASS.H 66  
2 TRAYS 2 CASES 13000 1 DRAWERS H66  
2 PLATEAUX 2 MALLETES 13000,  
1 BLOC TIROIR H66

Code

Weight (kg)

○ **010026055**

24-26

△ **010026056**



2 VASSOI 2 VALIGIE 6623 1 CASS. H200  
2 TRAYS 2 CASE 6623 1 DRAWER H200  
2 PLATEAUX, 2 MALLETES 16623,  
1 BLOC A' TIROIR H200

Code

Weight (kg)

○ **010026047**

20-22

△ **010026048**



2 VASSOI 2 VALIGIE 6623 1 CASS.H 66  
1 CASS.H 130  
2 TRAYS 2 CASES 6623 1 DRAWER H66,  
1 DRAWER H130  
2 PLATEAUX, 2 MALLETES 6623, 1 BLOC TIROIR  
H66, 1 BLOC TIROIR H130

Code

Weight (kg)

○ **010026057**

23-25

△ **010026058**



2 VASSOI 2 VALIGIE 6623 2 CASS H100  
2 TRAYS, 2 CASES 6623 2 DRAWERS H100  
2 PLATEAUX, 2 MALLETES 6623,  
2 BLOCS A' TIROIR H100

Code

Weight (kg)

○ **010026049**

22-24

△ **010026050**



2 VASSOI 2 VALIGIA 6623 3 CASS.H 66  
2 TRAYS 2 CASES 6623 3 DRAWERS H66,  
2 PLATEAUX 2 MALLETES 6623,  
3 BLOCS A' TIROIR H66

Code

Weight (kg)

○ **010026059**

28-30

△ **010026060**

**Cassettiere con cassetti e valigie**

Chests of drawers with tray & cases

Blocs à tiroirs avec tiroirs et plateaux pour mallettes

○ **507x483x360**

△ **507x483x410**



3 VASSOI 2 VALIGIE 6623 1 VALIGIA 10000,  
1 CASS. H 66  
3 TRAYS 2 CASES 6623 1 CASE 10000,  
1 DRAWER H66  
3 PLATEAUX, 2 MALLETTES 6623, 1 MALLETTA  
10000, 1 BLOC A' TIROIR H66

	Code	Weight (kg)
--	------	-------------

○ **010026061** 26-28

△ **010026062**



1 VASSOIO, 1 VALIGIA 17300 3 CASS.H 66,  
1 TRAY, 1 CASE 17300, 3 DRAWERS H66,  
1 PLATEAU, 1 MALLETTA 17300,  
3 BLOCS TIROIR H66

	Code	Weight (kg)
--	------	-------------

○ **010026071** 24-26

△ **010026072**



3 VASSOI 3 VALIGIA 6623 1 CASS. H100  
3 TRAYS 3 CASES 6623 1 DRAWERS H100  
3 PLATEAUX, 3 MALLETTES 6623,  
1 BLOC A' TIROIR H100

	Code	Weight (kg)
--	------	-------------

○ **010026063** 28-30

△ **010026064**



1 VASSOIO, 1 VALIGIA 13000 2 CASS.H66,  
1 CASS.H100  
1 TRAY, 1 CASE 1300, 2 DRAWERS H66,  
1 DRAWER H100  
1 PLATEAU, 1 MALLETTA 1300, 2 BLOCS TIROIR H66,  
1 BLOC TIROIR H100

	Code	Weight (kg)
--	------	-------------

○ **010026073** 23-25

△ **010026074**



1 VASSOIO 1 VALIGIA 10039 2 CASS. H66,  
1 CASS. H130  
1 TRAY, 1 CASE 10039, 2 DRAWERS H66,  
1 DRAWER H130  
1 PLATEAU, 1 MALLETTA 10039, 2 BLOCS A' TIROIR  
H66, 1 BLOC A' TIROIR H130

	Code	Weight (kg)
--	------	-------------

○ **010026065** 23-25

△ **010026066**



1 VASSOIO 1 VALIGIA 10039, 1 CASS.H 66,  
1 CASS.H200  
1 TRAY, 1 CASE 10039, 1 DRAWERS H66,  
2 DRAWERS H200  
AVEC 1 PLATEAU, 1 MALLETTA 10039, 1 BLOC  
TIROIR H66, 1 BLOC TIROIR H200

	Code	Weight (kg)
--	------	-------------

○ **010026075** 23-25

△ **010026076**



1 VASSOI 1 VALIGIE 6623 3 CASS. H66,  
1 CASS. H100  
1 TRAYS 1 CASE 6623 3 DRAWERS H66,  
1 DRAWER H100  
1 PLATEAUX, 1 MALLETTA 6623, 3 BLOCS A' TIROIR  
H66, 1 BLOC A' TIROIR H100

	Code	Weight (kg)
--	------	-------------

○ **010026067** 20-22

△ **010026068**



2 VASSOI, 1 VALIGIA 6623, 1 VALIGIA 13000,  
1 CASS.H130  
2 TRAYS, 1 CASE 6623, 1 CASE 13000,  
1 DRAWER H130  
2 PLATEAUX, 1 MALLETTA 6623, 1 MALLETTA 13000,  
1 BLOC TIROIR H130

	Code	Weight (kg)
--	------	-------------

○ **010026077** 23-25

△ **010026078**



2 VASSOI, 1 VALIGIE 10039 1 VALIGIE 13000,  
1 CASS H100  
2 TRAYS, 1 CASE 10039, 1 CASE 13000,  
1 DRAWER H100  
2 PLATEAUX, 1 MALLETTA 10039, 1 MALLETTA  
13000, 1 BLOC A' TIROIR H100

	Code	Weight (kg)
--	------	-------------

○ **010026069** 22-24

△ **010026070**



2 VASSOI, 1 VALIGIA 10039, 1 VALIGIA 17300,  
1 CASS.H 66  
2 TRAYS, 1 CASE 10039, 1 CASE 17300,  
1 DRAWER H66,  
2 PLATEAUX, 1 MALLETTA 10040, 1 MALLETTA  
17300, 1 BLOC A' TIROIR H66

	Code	Weight (kg)
--	------	-------------

○ **010026079** 28-30

△ **010026080**





TECNOLAM VAN

## Cassettiere

Chests of drawers

Blocs à tiroirs

### Cassettiere con cassetti e valigie

Chests of drawers with tray & cases

Blocs à tiroirs avec tiroirs et plateaux pour mallettes

○ 507x241x360

△ 507x241x410



1 VASSOIO, 1 VALIGIA 10000, 1 CASS. H 66  
1 TRAY 2, 1 CASE 10000, 1 DRAWER H66  
1 PIAZZA,, 1 MALLETTE 10000,  
1 BLOCCO A' TIROIR H66



1 VASSOIO, 1 VALIGIA 6623, 1 CASS.H 100  
1 TRAY, 1 CASE 6623, 1 DRAWER H100  
1 PIAZZA, 1 MALLETTE 6623,  
1 BLOCCO TIROIR H100

Code	Weight (kg)
○ 010026081	26-28
△ 010026082	

Code	Weight (kg)
○ 010026083	24-26
△ 010026084	

### Cassettiere con vassoi e valigie

Drawer with tray & cases

Blocs à tiroirs avec plateaux et mallettes

○ 1014x241x360

△ 1014x241x410



1 CASS. H66, 1 CASS. H200, 1 VASSOIO, 2 VALIGIE 10039  
1 DRAWER H66, 1 DRAWER H200, 1 TRAY,  
2 CASES 10039  
1 BLOCCO A' TIROIR H66, 1 BLOCCO A' TIROIR H200,  
1 PIAZZA, 2 MALLETTES 10039



1 CASS. H130, 2 VASSOI, 4 VALIGIE 10039,  
1 DRAWER H130, 2 TRAYS, 4 CASES 10039  
1 BLOCCO A' TIROIR H130, 2 PIAZZE,  
4 MALLETTES 10039

Code	Weight (kg)
○ 010026197	42-45
△ 010026198	

Code	Weight (kg)
○ 010026215	49-52
△ 010026216	



1 CASS. H100, 1 CASS. H130, 1 VASSOIO,  
2 VALIGIE 13046  
1 DRAWER H100, 1 DRAWER H130, 1 TRAY, 2  
CASES 13046  
1 BLOCCO A' TIROIR H100, 1 BLOCCO A' TIROIR H130,  
1 PIAZZA, 2 MALLETTES 13046,



1 CASS. H100, 1 CASS. H200, 1 VASSOIO,  
2 VALIGIE 6623  
1 DRAWER H100, 1 DRAWER H200, 1 TRAY,  
2 CASES 6623  
1 BLOCCO A' TIROIR H100, 1 BLOCCO A' TIROIR H200,  
1 PIAZZA, 2 MALLETTES 6623

Code	Weight (kg)
○ 010026211	43-47
△ 010026212	

Code	Weight (kg)
○ 010026217	42-43
△ 010026218	



1 CASS. H100, 2 VASSOI, 2 VALIGIE 13046,  
2 VALIGIE 10039  
1 DRAWER H100, 2 TRAYS, 2 CASES 13046,  
2 CASES 10039  
1 BLOCCO A' TIROIR H100, 2 PIAZZE, 2 MALLETTES  
13046, 2 MALLETTES 10039



1 CASS. H100, 2 VASSOI, 2 VALIGIE 13046,  
2 VALIGIE 6623,  
1 DRAWER H100, 2 TRAYS, 2 CASES 13046,  
2 CASES 6623  
1 BLOCCO A' TIROIR H100, 2 PIAZZE, 2 MALLETTES  
13046, 2 MALLETTES 6623

Code	Weight (kg)
○ 010026213	54-60
△ 010026214	

Code	Weight (kg)
○ 010026219	24-26
△ 010026220	



TECNOLAM VAN

## Cassettiere

Chests of drawers

Blocs à tiroirs

### Cassettiere con vassoi e valigie

Chests of drawers with tray & cases

Blocs à tiroirs avec plateaux et mallettes

○ 1014x241x360

△ 1014x241x410



1 CASS. H100, 3 VASSOI, 6 VALIGIE 6623,  
1 DRAWER H100, 3 TRAYS, 6 CASES 6623,  
1 BLOC A' TIROIR H100, 3 PLATEAUX,  
6 MALLETTES 6623

	Code	Weight (kg)
--	------	-------------

○ 010026221 55-59

△ 010026222



1 CASS. H66, 2 CASS. H100, 1 VASSOI, 2 VALIGIE 10039  
1 DRAWER H66, 2 DRAWERS H100, 1 TRAY,  
2 CASES 10039  
1 BLOC A' TIR. H66, 2 BLOCS A' TIR. H100, 1 BLOC A' TIR. H130, 2 PLATEAUX, 2 MALLETTES 10039

	Code	Weight (kg)
--	------	-------------

○ 010026231 47-51

△ 010026232



1 CASS. H130, 2 VASSOI, 2 VALIGIE 13046,  
2 VALIGIE 6623,  
1 DRAWER H130, 2 TRAYS, 2 CASES 13046,  
2 CASES 6623  
AVEC 1 BLOC A' TIROIR H130, 2 PLATEAUX,  
2 MALLETTES 13046, 2 MALLETTES 6623

	Code	Weight (kg)
--	------	-------------

○ 010026223 59-62

△ 010026224



1 CASS. H66, 2 VASSOI, 4 VALIGIE 13046,  
1 DRAWER H 66, 2 TRAYS, 4 CASES 13046,  
1 BLOC A' TIROIR H66, 2 PLATEAUX,  
4 MALLETTES 13046,

	Code	Weight (kg)
--	------	-------------

○ 010026233 46-49

△ 010026234



1 CASS. H200, 1 VASSOIO, 2 VALIGIE 17300  
1 DRAWER H200, 1 TRAY, 2 CASES 17300  
1 BLOC A' TIROIR H200, 1 PLATEAU,  
2 MALLETTES 17300,

	Code	Weight (kg)
--	------	-------------

○ 010026225 35-38

△ 010026226



1 CASS. H200, 2 VASSOI, 2 VALIGIE 6623,  
2 VALIGIE 6608  
1 DRAWER H200, 2 TRAYS, 2 CASES 6623,  
2 CASES 6608  
1 BLOC A' TIROIR H200, 2 PLATEAUX,  
2 MALLETTES 6623, 2 MALLETTES 6608

	Code	Weight (kg)
--	------	-------------

○ 010026235 55-59

△ 010026236



1 CASS. H66, 1 CASS. H100, 1 CASS. H130,  
1 VASSOIO, 2 VALIGIE 1 6623  
1 DRAWER H66, 1 DRAWER H100, 1 DRAWER H130, 1 TRAY, 2 CASES 6623  
1 BLOC A' TIROIR H66, 1 BLOC A' TIROIR H100,  
1 BLOC A' TIROIR H130, 1 PLATEAU, 2 MALLETTES

	Code	Weight (kg)
--	------	-------------

○ 010026227 59-62

△ 010026228



1 CASS. H66, 1 CASS. H100, 2 VASSOI, 2 VALIGIE 6623, 2 VALIGIE 10040  
1 DRAWER H66, 1 DRAWER H100, 2 TRAYS,  
2 CASES 6623, 2 CASES 10040  
AVEC 1 BLOC A' TIR. H66, 1 BLOC A' TIR. H100,  
2 PLATEAUX, 2 MALL. 6623, 2 MALL. 10040

	Code	Weight (kg)
--	------	-------------

○ 010026237 50-54

△ 010026238



1 CASS. H66, 1 CASS. H130, 2 VASSOI,  
4 VALIGIE 6623  
1 DRAWER H66, 1 DRAWER H100, 1 DRAWER H130, 1 TRAY, 4 CASES 6623  
1 BLOC A' TIROIR H66, 1 BLOC A' TIROIR H100,  
1 BLOC A' TIROIR H130, 1 PLATEAU, 4 MALLETTES

	Code	Weight (kg)
--	------	-------------

○ 010026229 52-55

△ 010026230



1 CASS. H66, 2 CASS. H100, 1 VASSOIO,  
2 VALIGIE 10039,  
1 DRAWER H66, 2 DRAWER H100, 1 TRAY,  
2 CASES 10039  
1 BLOC A' TIROIR H66, 1 BLOC A' TIROIR H100,  
1 PLATEAU, 2 MALLETTES 10039

	Code	Weight (kg)
--	------	-------------

○ 010026239 49-52

△ 010026240



1 CASS. H66, 2 VASSOI, 2 VALIGIE 13044,  
2 VALIGIE 10039,  
1 DRAWER H66, 2 TRAYS, 2 CASES 13044,  
2 CASES 10039  
1 BLOC A' TIROIR H66, 2 PLATEAUX,  
2 MALLETTES 13039, 2 MALLETTES 10048

Code	Weight (kg)
------	-------------

○ **010026241** 49-52

△ **010026242**



3 CASS. H66, 1 VASSOIO, 2 VALIGIE 17300  
3 DRAWERS H66, 1 TRAY, 2 CASES 17300  
3 BLOCS A' TIROIR H66, 1 PLATEAU,  
2 MALLETTES 17300

Code	Weight (kg)
------	-------------

○ **010026253** 41-43

△ **010026254**



1 CASS. H66, 2 VASSOI, 2 VALIGIE 17300,  
2 VALIGIE 10039,  
1 DRAWER H66, 2 TRAYS, 2 CASES 17300,  
2 CASES 10039  
1 BLOC A' TIROIR H66, 2 PLATEAUX,  
2 MALLETTES 17300, 2 MALLETTES 10039

Code	Weight (kg)
------	-------------

○ **010026243** 49-52

△ **010026244**



2 CASS. H100, 2 VASSOI, 4 VALIGIE 6623,  
2 DRAWERS H100, 2 TRAYS, 4 CASES 6623  
2 BLOC A' TIROIR H100, 2 PLATEAUX,  
4 MALLETTES 6623,

Code	Weight (kg)
------	-------------

○ **010026255** 49-55

△ **010026256**



2 CASS. H100, 1 VASSOIO, 2 VALIGIE 17300  
2 DRAWERS H100, 1 TRAY, 2 CASES 17300  
2 BLOC A' TIROIR H100, 1 PLATEAU,  
2 MALLETTES 17300,

Code	Weight (kg)
------	-------------

○ **010026245** 37-42

△ **010026246**



2 CASS. H66, 1 CASS. H100, 1 VASSOIO,  
2 VALIGIE 13046  
2 DRAWERS H66, 1 DRAWER H100, 1 TRAY,  
2 CASES 13046  
2 BLOCS A' TIROIR H66, 1 BLOC A' TIROIR H100,  
PLATEAU, 2 MALLETTES 13046

Code	Weight (kg)
------	-------------

○ **010026257** 44-48

△ **010026258**



2 CASS. H130, 1 VASSOI, 2 VALIGIE 10039  
2 DRAWERS H130, 1 TRAY, 2 CASES 10039  
2 BLOCS A' TIROIR H130, 2 PLATEAUX,  
2 MALLETTES 10039

Code	Weight (kg)
------	-------------

○ **010026247** 45-48

△ **010026248**



2 CASS. H66, 2 VASSOI, 4 VALIGIE 10039  
2 DRAWERS H66, 1 TRAY, 4 CASES 10039  
2 BLOCS A' TIROIR H66, 2 PLATEAUX  
4 MALLETTES 10039

Code	Weight (kg)
------	-------------

○ **010026259** 55-59

△ **010026260**



2 CASS. H66, 1 CASS. H130, 1 VASSOI,  
2 VALIGIE 10039  
WITH 2 DRAWERS H66, 1 DRAWER H130, 1 TRAY,  
2 CASES 10039  
2 BLOCS A' TIROIR H66, 1 BLOCS A' TIROIR H130,  
1 PLATEAU, 2 MALLETTES 10039

Code	Weight (kg)
------	-------------

○ **010026249** 47-49

△ **010026250**



3 CASS. H100, 1 VASSOIO, 2 VALIGIE 6623  
3 DRAWERS H100, 1 TRAY, 2 CASES 6623  
2 BLOCS A' TIROIR H100, 1 PLATEAU,  
2 MALLETTES 6623

Code	Weight (kg)
------	-------------

○ **010026261** 43-50

△ **010026262**



2 CASS. H66, 2 VASSOI, 2 VALIGIE 6623,  
2 VALIGIE 13039,  
2 DRAWERS H66, 2 TRAYS, 2 CASES 6623,  
2 CASES 13039  
2 BLOCS A' TIROIR H66, 2 PLATEAUX,  
2 MALLETTES 6623, 2 MALLETTES 13039

Code	Weight (kg)
------	-------------

○ **010026251** 50-52

△ **010026252**



3 CASS. H66, 2 VASSOI, 4 VALIGIE 6623  
3 DRAWERS H66, 2 TRAYS, 4 CASES 6623  
3 BLOCS A' TIROIR H66, 2 PLATEAUX,  
4 MALLETTES 6623

Code	Weight (kg)
------	-------------

○ **010026263** 43-50

△ **010026264**



TECNOLAM VAN

## Cassettiere

Chests of drawers

Blocs à tiroirs

### Cassettiere con vassoi e valigie

Chests of drawers with tray & cases

Blocs à tiroirs avec plateaux et mallettes

○ 1014x241x360

△ 1014x241x410



4 CASS. H66, 1 VASSOIO, 2 VALIGIE 10039  
2 DRAWERS H66, 1 TRAY, 2 CASES 10039  
AVEC 2 BLOC A' TIROIR H66, 1 PLATEAU ,  
2 MALLETTES 10039

	Code	Weight (kg)
○	<b>010026265</b>	37-42
△	<b>010026266</b>	



1 CASS. H66, 3 VASSOI, 4 VALIGIE 6623,  
2 VALIGIE 10039  
1 DRAWER H66, 2 TRAYS, 4 CASES 6623,  
2 CASES 10039  
1 BLOC A' TIROIR H66, 3 PLATEAUX ,  
2 MALLETTES 6623, 2 VALIGIE 10039

	Code	Weight (kg)
○	<b>010026269</b>	56-58
△	<b>010026270</b>	



3 CASS. H66, 1 CASS. H100, 1 VASSOI,  
2 VALIGIE 6623  
3 DRAWERS H66, DRAWERS H100 1 TRAY,  
2 CASES 6623  
3 BLOCS A' TIROIR H66, 1 BLOC A' TIROIR H100,  
1 PLATEAU , 2 MALLETTES 6623

	Code	Weight (kg)
○	<b>010026267</b>	48-50
△	<b>010026268</b>	

1 CASS. H100, 2 VASSOI, 2 VALIGIE 6623,  
2 VALIGIE 17300  
1 DRAWER H100, 2 TRAYS, 2 CASES 6623,  
2 CASES 17300  
1 BLOC A' TIROIR H100, 2 PLATEAUX ,  
2 MALLETTES 6623, 2 VALIGIE 17300

	Code	Weight (kg)
○	<b>010026271</b>	56-58
△	<b>010026272</b>	



TECNOLAM VAN

### Cassettiere

Chests of drawers

Blocs à tiroirs



### Cassettiere laterali

Chests of drawers with side opening

Blocs à tiroirs latéraux

**360x483x507**



2 CASS. H100, 1 CASS. H200  
2 DRAWERS H100, 1 DRAWER H200  
2 BLOCS A' TIROIR H100, 1 BLOC A' TIROIR H20

Code

Weight (kg)

**010026273**

20



2 CASS. H200,  
2 DRAWERS H200,  
2 BLOCS A' TIROIR H200

Code

Weight (kg)

**010026275**

17



3 CASS. H130,  
3 DRAWERS H130,  
3 BLOCS A' TIROIR H130

Code

Weight (kg)

**010026274**

22



4 CASS. H100,  
4 DRAWERS H100,  
4 BLOCS A' TIROIR H100

Code

Weight (kg)

**010026276**

20

## Scaffalature con cassetti basculanti

Shelvings with transparent containers

Etageres avec bacs transparents



Le scaffalature con contenitori basculanti Tecnomat permettono di stivare tutti i tipi di minuterie in massima sicurezza, e rendere visibile il contenuto grazie ai suoi cassetti trasparenti. Tutti i cassetti sono asportabili e muniti di chiusura di sicurezza

Tecnomat shelvings with transparent containers allow to stow all kinds of small parts safely, and seeing what is inside thanks to their transparently containers. All drawers are removable and provided with safety lock

Les etageres avec bacs transparents Tecnomat permettent de ranger tout type de minuterie avec une sécurité maximale, et de rendre visible le contenu à travers ses bacs transparents. Tous les tiroirs sont amovibles et équipés de fermeture de sécurité

Code	Dimension	N.	
<b>010026504</b>	760X241X260	4	
<b>010026505</b>	760X241X320	4	
<b>010026506</b>	760X241X360	4	
<b>010026507</b>	760X362X260	10	
<b>010026508</b>	760X362X320	10	
<b>010026509</b>	760X362X360	10	

**Armadi**  
Cupboard Units  
Armoires





TECNOLAM VAN

## Armadi

Cupboard Units

Armoires



Gli armadi TecnoLam , sono realizzati completamente in acciaio e sono realizzati in quattro versioni di grandezza per soddisfare ogni esigenza. Sono disponibili in larghezza da 507 mm , in quattro altezze 483-724-966-1.207 mm e in due profondità 360-410. mm. Gli armadi sono forniti di doppia antina per ridurre lo spazio di apertura, e la chiusura è triplice per garantire un perfetto serraggio. All'interno sono muniti di ripiani regolabili, o di astine appendiabiti. Gli armadi con altezza 724-966-1.207 mm hanno la parte superiore più stretta in quanto il fianco dell'armadio è a forma trapezoidale in modo da seguire le curvature del furgone.

TecnoLam cupboard units are completely made of steel and are available in four different sizes to satisfy all needs. The available dimensions are: 507 mm W, 483-724-966-1.207 mm H. and 360-410 mm D. Cupboards are supplied with double door to reduce the door span and triple locking to guarantee a perfect closing. They are provided with adjustable shelves or coat hanger bars. The cupboard units 724-966-1.207 mm high have a tighter top than the bottom, being the side part shaped as a trapezium to fit the van curves.

Les armoires TecnoLam sont entièrement réalisées en acier et aluminium vernis, et sont fabriqués en quatre tailles différentes pour satisfaire toute exigence. Ils sont disponibles en largeurs de 507 mm, en quatre hauteurs 483-724-966-1.207 mm, et deux profondeurs de 360 à 410. mm. Les armoires sont équipées avec double porte pour réduire l'espace d'ouverture, et la fermeture est triple pour assurer une parfaite fermeture. A l'intérieur ils sont équipés de tablettes réglables, ou de tiges pour accrocher des vêtements. Les armoires d'hauteur 724-966-1.207 mm ont le sommet plus étroit, dès que le côté de l'armoire est de forme trapézoïdale pour suivre la courbure de la fourgonnette





TECNOLAM VAN

## Armadi

Cupboard Units

Armoires



### Armadi completi

Complete cupboard units

Armoires complets

Code	Description	kg
<b>010025707</b>	2 ripiani 507X724X360 2 shelves 507x724x360 2 tablettes 507x724x360	17.84
<b>010025708</b>	2 ripiani 507X724X410 2 shelves 507x724x410 2 tablettes 507x724x410	21.56
<b>010025701</b>	3 ripiani 507X1207X360 3 shelves 507X1207X360 3 tablettes 507X1207X360	23.52
<b>010025702</b>	3 ripiani 507X1207X410 3 shelves 507X1207X410 3 tablettes 507X1207X410	28.42
<b>010025703</b>	3 ripiani 507X966X360 3 shelves 507X966X360 3 tablettes 507X966X360	20.58
<b>010025704</b>	3 ripiani 507X966X410 3 shelves 507X966X410 3 tablettes 507X966X410	26.07
<b>010025705</b>	1 ripiani 507X483X360 1 shelves 507X483X360 1 tablettes 507X483X360	12.54
<b>010025706</b>	1 ripiani 507X483X410 1 shelves 507X483X410 1 tablettes 507X483X410	14.70

## Scaffalature

Shelvings

Etagères



Le scaffalature Tecnolam sono realizzate con una struttura portante in acciaio di alto spessore per sorreggere e stivare qualsiasi carico in sicurezza. I tappetini antiolio sono di serie insieme ai divisori. Sono disponibili in sei lunghezze 253-507-760-1014-1268-1511mm, 6 altezze 161-241-362-402-444-483 mm e in 5 profondità 220-260-320-360-410 mm

Tecnolam shelvings are made of a supporting high thickness-steel structure to stow any load in safety. Anti-oil carpets and dividers are series models. Shelves are available in six widths 253-507-760-1014-1268-1521mm, 6 heights 161-241-362-402-444-483 mm and in 5 depths 220-260-320-360-410 mm

Les étagères Tecnolam sont réalisées avec une structure portante en acier haut épaisseur pour soutenir toute charge et ranger en toute sécurité. Les tapis anti-huile si bien que les séparateurs sont fournis avec. Ils sont disponibles en six longueurs 253-507-760-1014-1268-1521mm, 6 hauteur 161-241-362-402-444-483 mm et 5 profondeurs de 220-260-320-360-410mm



TECNOLAM VAN

## Scaffalature con divisori

Shelvings with dividers

Etagères avec séparateurs



### Scaffalature 253 con tappettino

Shelving 253 with soft rubber mat

Etagères 253 avec tapis

Code	Dimension (LxHxD) mm	Weight (kg)
010025212	253X161X220	2,12
010025213	253X161X260	2,45
010025214	253X161X320	2,68
010025215	253X241X260	3,05
010025216	253X241X320	4,41
010025206	253X241X360	4,95
010025217	253X241X410	5,94
010025218	253X362X220	4,02
010025219	253X362X260	4,83
010026844	253X362X320	5
010025221	253X362X360	6,53
010025222	253X362X410	7,68
010025224	253X402X360	7,01
010025225	253X402X410	8,28
010025226	253X444X360	7,59
010025227	253X444X410	8,88
010025231	253X483X360	8,05
010025232	253X483X410	9,4

### Scaffalatura 507 2 divisori regolabili e tappettino

Shelv. 507  
2 adjustable dividers and soft rubber mat

Etagère 507  
2 séparateurs réglables et tapis

Code	Dimension (LxHxD) mm	Weight (kg)
010025233	507X161X220	3,07
010025234	507X161X260	3,44
010025235	507X161X320	3,66
010025201	507X241X260	4,04
010025236	507X241X320	5,65
010025207	507X241X360	6,43
010025237	507X241X410	7,8
010025238	507X362X220	4,97
010026843	507X362X320	6
010025239	507X362X260	5,82
010025241	507X362X360	8,01
010025242	507X362X410	9,54
010025244	507X402X360	8,49
010025245	507X402X410	10,14
010025246	507X444X360	9,07
010025247	507X444X410	10,74
010025251	507X483X360	9,53
010025252	507X483X410	11,26



TECNOLAM VAN

## Scaffalature con divisori

Shelvings with dividers

Etagères avec séparateurs



### Scaffalatura 760 con 3 divisori regolabili e tappettino

Shelv. 760 with 3 adjustable dividers  
and soft rubber mat

Etagère 760 avec 3 séparateurs  
réglables et tapis

Code	Dimension (LxHxD) mm	Weight (kg)
<b>010025253</b>	760X161X220	3,82
<b>010025254</b>	760X161X260	4,42
<b>010025255</b>	760X161X320	4,57
<b>010025202</b>	760X241X260	5,02
<b>010025256</b>	760X241X320	6,92
<b>010025208</b>	760X241X360	7,91
<b>010025257</b>	760X241X410	9,72
<b>010025258</b>	760X362X220	5,72
<b>010025259</b>	760X362X260	6,8
<b>010026842</b>	760X362X320	7,5
<b>010025261</b>	760X362X360	9,49
<b>010025262</b>	760X362X410	11,46
<b>010025264</b>	760X402X360	9,97
<b>010025265</b>	760X402X410	2,06
<b>010025266</b>	760X444X360	10,55
<b>010025267</b>	760X444X410	12,66
<b>010025271</b>	760X483X360	11,01
<b>010025272</b>	760X483X410	13,18

### Scaffalatura 1014 con 4 divisori regolabili e tappettino

Shelv. 1014 with 4 adjustable dividers  
and soft rubber mat

Etagère 1014  
avec 4 séparateurs réglables et tapis

Code	Dimension (LxHxD) mm	Weight (kg)
<b>010025273</b>	1.040X161X220	5,48
<b>010025274</b>	1.040X161X260	5,32
<b>010025275</b>	1.040X161X320	5,48
<b>010025203</b>	1.040X241X260	5,92
<b>010025276</b>	1.040X241X320	9,19
<b>010025209</b>	1.040X241X360	10,55
<b>010025277</b>	1.040X241X410	11,54
<b>010025278</b>	1.040X362X220	7,38
<b>010025279</b>	1.040X362X320	7,7
<b>010026841</b>	1.040X362X260	9
<b>010025281</b>	1.040X362X360	12,13
<b>010025282</b>	1.040X362X410	13,28
<b>010025284</b>	1.040X402X360	12,61
<b>010025285</b>	1.040X402X410	13,88
<b>010025286</b>	1.040X444X360	13,19
<b>010025287</b>	1.040X444X410	14,48
<b>010025291</b>	1.040X483X360	13,65
<b>010025292</b>	1.040X483X410	15



TECNOLAM VAN

## Scaffalature con divisori

Shelvings with dividers

Etagères avec séparateurs

### Scaffalatura 1268 con 5 divisori regolabili e tappettino

Shelv. 1268 with 5 adjustable dividers  
and soft rubber mat

Etagère 1268 avec 5 séparateurs  
réglables et tapis

Code	Dimension (LxHxD) mm	Weight (kg)
<b>010025293</b>	1.268X161X220	6,46
<b>010025294</b>	1.268X161X260	7,36
<b>010025295</b>	1.268X161X320	6,38
<b>010025204</b>	1.268X241X260	7,96
<b>010025296</b>	1.268X241X320	10,77
<b>010025210</b>	1.268X241X360	12,09
<b>010025297</b>	1.268X241X410	14,87
<b>010025298</b>	1.268X362X220	8,36
<b>010025299</b>	1.268X362X260	9,74
<b>010026839</b>	1.268X362X320	10,5
<b>010025313</b>	1.268X362X360	13,67
<b>010025314</b>	1.268X362X410	16,61
<b>010025316</b>	1.268X402X360	14,15
<b>010025317</b>	1.268X402X410	17,21
<b>010025318</b>	1.268X444X360	14,73
<b>010025319</b>	1.268X444X410	17,81
<b>010025323</b>	1.268X483X360	15,19
<b>010025324</b>	1.268X483X410	18,33

### Scaffalatura 1521 con 6 divisori regolabili e tappettino

Shelv. 1521 with 6 adjustable dividers  
and soft rubber mat

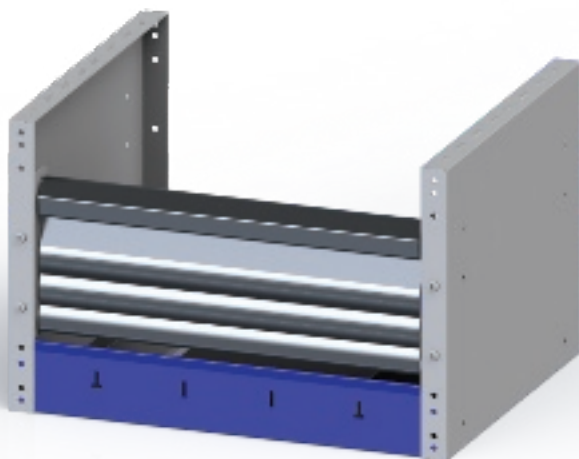
Etagère 1521  
avec 6 séparateurs réglables et tapis

Code	Dimension (LxHxD) mm	Weight (kg)
<b>010025325</b>	1.521X161X220	7,5
<b>010025326</b>	1.521X161X260	8,55
<b>010025327</b>	1.521X161X320	7,28
<b>010025205</b>	1.521X241X260	9,15
<b>010025328</b>	1.521X241X320	12,66
<b>010025211</b>	1.521X241X360	13,97
<b>010025329</b>	1.521X241X410	17,39
<b>010025330</b>	1.521X362X220	9,4
<b>010025331</b>	1.521X362X260	10,93
<b>010026840</b>	1.521X362X320	11,6
<b>010025333</b>	1.521X362X360	15,55
<b>010025336</b>	1.521X362X410	19,13
<b>010025337</b>	1.521X402X360	16,03
<b>010025338</b>	1.521X402X410	10,73
<b>010025339</b>	1.521X444X360	16,61
<b>010025340</b>	1.521X444X410	20,33
<b>010025344</b>	1.521X483X360	17,07
<b>010025345</b>	1.521X483X410	20,85

## Scaffalature con antina e divisori

Shelvings with door and dividers

Etagere avec porte et séparateurs



### Scaffalature 507 + 2 divisori

Shelv. 507 with door + 2 adjustable dividers

Etagere 507 avec porte + 2 séparateurs

Code	Dimension (LxHxD) mm	Weight (kg)
010027101	507X362X260	6,0
010027102	507X362X320	7,0
010027103	507X362X360	8,0
010027104	507X362X410	9,0
010027107	507X402X360	8,5
010027108	507X402X410	9,5
010027111	507X444X360	9,0
010027112	507X444X410	9,5
010027115	507X483X360	9,0
010027116	507X483X410	10,0

### Scaffalature 760 + 3 divisori

Shelv. 760 with door + 3 adjustable dividers

Etagere 760 avec porte + 3 séparateurs

Code	Dimension (LxHxD) mm	Weight (kg)
010027117	760X362X260	8,0
010027118	760X362X320	9,0
010027119	760X362X360	10,5
010027120	760X362X410	11,0
010027121	760X402X360	11,0
010027122	760X402X410	11,0
010027123	760X444X360	11,0
010027124	760X444X410	12,0
010027125	760X483X360	12,0
010027126	760X483X410	12,0

### Scaffalature 1014 + 4 divisori

Shelv. 1014 with door + 4 adjustable dividers

Etagere 1014 avec porte + 4 séparateurs

Code	Dimension (LxHxD) mm	Weight (kg)
010027127	1014X362X260	9,0
010027128	1014X362X320	12,5
010027129	1014X362X360	13,0
010027136	1014X362X410	11,0
010027130	1014X402X360	13,0
010027131	1014X402X410	13,0
010027132	1014X444X360	13,0
010027133	1014X444X410	14,0
010027134	1014X483X360	14,0
010027135	1014X483X410	14,0



TECNOLAM VAN

## Scaffalature con antina e divisori

Shelvings with door and dividers

Etagere avec porte et separateurs

### Scaffalature 1268 + 5 divisori divisori

Shelv. 1268 with door + 5 adjustable dividers

Etagere 1268 avec porte + 5 separateurs

Code	Dimension (LxHxD) mm	Weight (kg)
<b>010027137</b>	1268X362X260	11,0
<b>010027138</b>	1268X362X320	14,0
<b>010027139</b>	1268X362X360	15,0
<b>010027146</b>	1268X362X410	13,0
<b>010027140</b>	1268X402X360	14,0
<b>010027141</b>	1268X402X410	15,5
<b>010027142</b>	1268X444X360	15,0
<b>010027143</b>	1268X444X410	16,0
<b>010027144</b>	1268X483X360	15,0
<b>010027145</b>	1268X483X410	16,0

### Scaffalature 1521 + 6 divisori divisori

Shelv. 1521 with door + 6 adjustable dividers

Etagere 1521 avec porte + 6 separateurs

Code	Dimension (LxHxD) mm	Weight (kg)
<b>010027148</b>	1521X362X260	12,0
<b>010027149</b>	1521X362X320	14,0
<b>010027150</b>	1521X362X360	15,0
<b>010027157</b>	1521X362X410	13,0
<b>010027151</b>	1521X402X360	15,0
<b>010027152</b>	1521X402X410	16,0
<b>010027153</b>	1521X444X360	15,0
<b>010027154</b>	1521X444X410	16,0
<b>010027155</b>	1521X483X360	15,0
<b>010027156</b>	1521X483X410	16,0

## Scaffalatura per contenitori in plastica asportabili

Shelvings with removable plastic Containers

Etagère avec bacs en plastique à emporter



Le scaffalature Tecnomam **con contenitori in plastica asportabili** sono realizzate con una struttura in acciaio di alto spessore fatte in modo da tenere ancorati i contenitori anche in movimento. Le scaffalature sono disponibili in 5 lunghezze, 507-760-1014-1268-1521 mm , in 2 altezze 161-241 mm e in 5 profondità 180-220-260-320-360 mm I contenitori in plastica sono disponibili in tre modelli 102-103-104 e sono tutti asportabili

Tecnomam shelvings with **removable plastic containers** are made of a high-thickness steel structure to keep containers anchored while the vehicle moves. They are available in 5 widths, 507-760-1014-1268-1521 mm , 2 heights 161-241 mm and 5 depths 180-220-260-320-360 mm. Our removable plastic containers are available in three models: 102-103-104

Les étagères amovibles Tecnomam avec **bacs plastique amovibles** sont composées par une structure en acier haut épaisseur, et sont produites de façon à maintenir ancrés les conteneurs pendant le mouvement aussi. Les étagères sont disponibles en 5 longueurs, 507-760-1014-1268-1521 mm, en 2 hauteurs 161-241 mm, et en profondeurs 180-220-260-320-360 5 mm. Les bacs sont disponibles en trois modèles 102 -103 à 104 et ils sont tous amovibles.



Code	<b>L 507</b> Dimension (LxHxD) mm	kg
<b>010025347</b>	507X161X220 • 4 VASCHETTE 102 • 4 CONTAINERS 102 • 4 WANNEN 102	3,21
<b>010025348</b>	507X161X260 • 3 VASCHETTE 103 • 3 CONTAINERS 103 • 3 WANNEN 103	3
<b>010025401</b>	507X241X260 • 3 VASCHETTE 103 • 3 CONTAINERS 103 • 3 WANNEN 103	4,97
<b>010025349</b>	507X241X320 • 2 VASCHETTE 104 • 2 CONTAINERS 104 • 2 WANNEN 104	5,27
<b>010025406</b>	507X241X360 • 2 VASCHETTE104 • 2 CONTAINERS 104 • 2 WANNEN 104	5,67
<b>010025881</b>	507X362X320 • 2 VASCHETTE104 • 2 CONTAINERS 104 • 2 WANNEN 104	6.5
<b>010025892</b>	507X362X360 • 2 VASCHETTE104 • 2 CONTAINERS 104 • 2 WANNEN 104	6.8
<b>010025902</b>	507X362X410 • 2 VASCHETTE104 • 2 CONTAINERS 104 • 2 WANNEN 104	7
<b>010025886</b>	507X402X320 • 2 VASCHETTE104 • 2 CONTAINERS 104 • 2 WANNEN 104	6.8
<b>010025897</b>	507X402X360 • 2 VASCHETTE104 • 2 CONTAINERS 104 • 2 WANNEN 104	7
<b>010025907</b>	507X402X410 • 2 VASCHETTE104 • 2 CONTAINERS 104 • 2 WANNEN 104	8

Code	<b>L 760</b> Dimension (LxHxD) mm	kg
<b>010025351</b>	760X161X220 • 6 VASCHETTE 102 • 6 CONTAINERS 102 • 6 WANNEN 102	4,21
<b>010025352</b>	760X161X260 • 4 VASCHETTE103 • 4 CONTAINERS 103 • 4 WANNEN 103	3,9
<b>010025402</b>	760X241X260 • 4 VASCHETTE 103 • 4 CONTAINERS 103 • 4 WANNEN 103	6,24
<b>010025353</b>	760X241X320 • 3 VASCHETTE 104 • 3 CONTAINERS 104 • 3 WANNEN 104	7,05
<b>010025407</b>	760X241X360 • 3 VASCHETTE 104 • 3 CONTAINERS 104 • 3 WANNEN 104	7,45
<b>010025882</b>	760X362X320 • 3 VASCHETTE 104 • 3 CONTAINERS 104 • 3 WANNEN 104	8
<b>010025893</b>	760X362X360 • 3 VASCHETTE 104 • 3 CONTAINERS 104 • 3 WANNEN 104	8
<b>010025903</b>	760X362X410 • 3 VASCHETTE 104 • 3 CONTAINERS 104 • 3 WANNEN 104	8,5
<b>010025887</b>	760X402X320 • 3 VASCHETTE 104 • 3 CONTAINERS 104 • 3 WANNEN 104	8
<b>010025898</b>	760X402X360 • 3 VASCHETTE 104 • 3 CONTAINERS 104 • 3 WANNEN 104	8,5
<b>010025908</b>	507X402X410 • 2 VASCHETTE104 • 2 CONTAINERS 104 • 2 WANNEN 104	8

Code	<b>L 1014</b> Dimension (LxHxD) mm	kg
<b>010025355</b>	1.014X161X220 • 8 VASCHETTE 102 • 8 CONTAINERS 102 • 8 WANNEN 102	5,22
<b>010025356</b>	1.014X161X260 • 6 VASCHETTE 103 • 6 CONTAINERS 103 • 6 WANNEN 103	5,45
<b>010025403</b>	1.014X241X260 • 6 VASCHETTE 103 • 6 CONTAINERS 103 • 6 WANNEN 103	5,62
<b>010025357</b>	1.014X241X320 • 4 VASCHETTE 104 • 4 CONTAINERS 104 • 4 WANNEN 104	8,17
<b>010025408</b>	1.014X241X360 • 4 VASCHETTE 104 • 4 CONTAINERS 104 • 4 WANNEN 104	8,57
<b>010025883</b>	1.014X362X320 • 4 VASCHETTE 104 • 4 CONTAINERS 104 • 4 WANNEN 104	9
<b>010025894</b>	1.014X362X360 • 4 VASCHETTE 104 • 4 CONTAINERS 104 • 4 WANNEN 104	9
<b>010025904</b>	1.014X362X410 • 4 VASCHETTE 104 • 4 CONTAINERS 104 • 4 WANNEN 104	10
<b>010025888</b>	1.014X402X320 • 4 VASCHETTE 104 • 4 CONTAINERS 104 • 4 WANNEN 104	9
<b>010025899</b>	1.014X402X360 • 4 VASCHETTE 104 • 4 CONTAINERS 104 • 4 WANNEN 104	9
<b>010025909</b>	1.014X402X410 • 4 VASCHETTE 104 • 4 CONTAINERS 104 • 4 WANNEN 104	10



TECNOLAM VAN

### Scaffalatura per contenitori asportabili

Shelvings with removable Containers

Etagère avec bacs en plastique amovibles

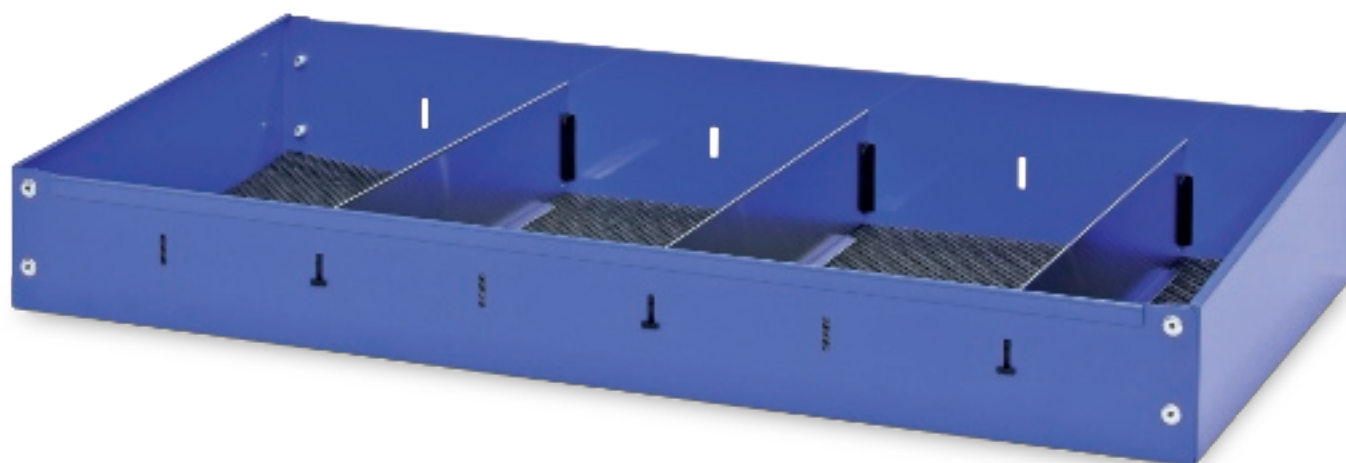


Code	<b>L 1268</b> Dimension (LxHxD) mm	kg
<b>010025359</b>	1.268X161X220 • 10 VASCHETTE 102 • 10 CONTAINERS 102 • 10 WANNEN 102	6,22
<b>010025360</b>	1.268X161X260 • 8 VASCHETTE 103 • 8 CONTAINERS 103 • 8 WANNEN 103	6,5
<b>010025404</b>	1.268X241X260 • 8 VASCHETTE 103 • 8 CONTAINERS 103 • 8 WANNEN 103	9,25
<b>010025361</b>	1.268X241X320 • 5 VASCHETTE 104 • 5 CONTAINERS 104 • 5 WANNEN 104	9,16
<b>010025409</b>	1.268X241X360 • 5 VASCHETTE 104 • 5 CONTAINERS 104 • 5 WANNEN 104	9,56
<b>010025884</b>	1.268X362X320 • 5 VASCHETTE 104 • 5 CONTAINERS 104 • 5 WANNEN 104	10,5
<b>010025895</b>	1.268X362X360 • 5 VASCHETTE 104 • 5 CONTAINERS 104 • 5 WANNEN 104	10,5
<b>010025905</b>	1.268X362X410 • 5 VASCHETTE 104 • 5 CONTAINERS 104 • 5 WANNEN 104	11,5
<b>010025889</b>	1.268X402X320 • 5 VASCHETTE 104 • 5 CONTAINERS 104 • 5 WANNEN 104	10,5
<b>010025900</b>	1.268X402X360 • 5 VASCHETTE 104 • 5 CONTAINERS 104 • 5 WANNEN 104	10,5
<b>010025910</b>	1.268X402X410 • 5 VASCHETTE 104 • 5 CONTAINERS 104 • 5 WANNEN 104	11,5

Code	<b>L 1521</b> Dimension (LxHxD) mm	kg
<b>010025363</b>	1.521X161X220 • 12 VASCHETTE 102 • 12 CONTAINERS 102 • 12 WANNEN 102	5,9
<b>010025364</b>	1.521X161X260 • 9 VASCHETTA 103 • 9 CONTAINERS 103 • 9 WANNEN 103	6,9
<b>010025405</b>	1.521X241X260 • 9 VASCHETTE 103 • 9 CONTAINERS 103 • 9 WANNEN 103	7,6
<b>010025365</b>	1.521X241X320 • 7 VASCHETTE 104 • 7 CONTAINERS 104 • 7 WANNEN 104	8
<b>010025366</b>	1.521X241X360 • 7 VASCHETTE 104 • 7 CONTAINERS 104 • 7 WANNEN 104	8,8
<b>010025885</b>	1.521X362X320 • 7 VASCHETTE 104 • 7 CONTAINERS 104 • 7 WANNEN 104	12
<b>010025896</b>	1.521X362X360 • 7 VASCHETTE 104 • 7 CONTAINERS 104 • 7 WANNEN 104	12,5
<b>010025906</b>	1.521X362X410 • 7 VASCHETTE 104 • 7 CONTAINERS 104 • 7 WANNEN 104	13
<b>010025890</b>	1.521X402X320 • 7 VASCHETTE 104 • 7 CONTAINERS 104 • 7 WANNEN 104	12
<b>010025901</b>	1.521X402X360 • 7 VASCHETTE 104 • 7 CONTAINERS 104 • 7 WANNEN 104	12,5
<b>010025901</b>	1.521X402X0 • 7 VASCHETTE 104 • 7 CONTAINERS 104 • 7 WANNEN 104	13

## Scaffalatura terminale con divisori

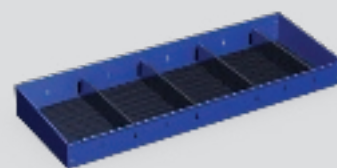
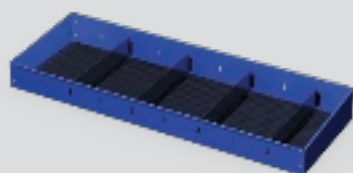
Terminal shelvings with dividers  
Étagère terminale avec séparateurs



Le scaffalature terminali sono da utilizzare come ultimo elemento nelle diverse composizioni, che grazie alla sezione trapezoidale dei fianchi ne riduce l'ingombro. Sono disponibili in 6 lunghezze 253-507-760-1014-1268-1521 mm , in due altezze 100-110 mm e in 5 profondità 220-260-320-360- 410 mm

Terminal shelvings represent the last element of a van racking, whose volume is reduced thanks to the shelving side, shaped as a trapezium. They are available in six widths 253-507-760-1014-1268-1521 mm , two heights 100-110 mm and five depths 220-260-320- 360- 410 mm

Les étagères terminales sont à utiliser comme le dernier élément dans les différentes compositions; grâce à la section trapézoïdale l'encombrement est réduit. Ils sont disponibles en 6 longueurs 253-507-760-1014-1268-1521 mm, en deux hauteurs 100-110 mm et en 5 profondeurs 220-260-320-360 - 410 mm



**Scaffalatura terminale con divisori**

Terminal shelvings with dividers

Etagère terminale avec séparateurs

**Scaffalatura terminale L 253  
con tappetino**Terminal Shelvings L 253  
with soft rubber matEtagère terminale L253  
avec tapis

Code	Dimension (LxHxD) mm	Weight (kg)
<b>010025602</b>	253X100X220	1,01
<b>010025603</b>	253X100X260	1,15
<b>010025604</b>	253X110X320	1,59
<b>010025605</b>	253X110X360	1,78

**Scaffalatura terminale L 507  
con 2 divisori regolabili e tappetino**Terminal Shelvings L 507 with 2 adjustable dividers  
and soft rubber matEtagère terminale L 507  
avec 2 séparateurs réglables et tapis

Code	Dimension (LxHxD) mm	Weight (kg)
<b>010025607</b>	507X100X220	1,96
<b>010025301</b>	507X100X260	2,14
<b>010025608</b>	507X110X320	2,83
<b>010025306</b>	507X110X360	3,26

**Scaffalatura terminale L 760  
con 3 divisori regolabili e tappetino**Terminal Shelvings L 760 with 3 adjustable dividers  
and soft rubber matEtagère terminale L 760  
avec 3 séparateurs réglables et tapis

Code	Dimension (LxHxD) mm	Weight (kg)
<b>010025610</b>	760X100X220	2,71
<b>010025302</b>	760X100X260	3,12
<b>010025612</b>	760X110X320	4,1
<b>010025307</b>	760X110X360	4,74

**Scaffalatura terminale L 1014  
con 4 divisori regolabili e tappetino**Terminal Shelvings L 1014 with 4 adjustable dividers  
and soft rubber matEtagère terminale L 1014  
avec 4 séparateurs réglables et tapis

Code	Dimension (LxHxD) mm	Weight (kg)
<b>010025614</b>	1.014X100X220	4,37
<b>010025303</b>	1.014X100X260	4,02
<b>010025615</b>	1.014X110X320	6,37
<b>010025308</b>	1.014X110X360	7,38

**Scaffalatura terminale L 1268  
con 5 divisori regolabili e tappetino**Terminal Shelvings L 1268 with 5 adjustable dividers  
and soft rubber matEtagère terminale L 1268  
avec 5 séparateurs réglables et tapi

Code	Dimension (LxHxD) mm	Weight (kg)
<b>010025617</b>	1.268X100X220	5,35
<b>010025304</b>	1.268X100X260	6,06
<b>010025618</b>	1.268X110X320	7,95
<b>010025309</b>	1.268X110X360	8,92

**Scaffalatura terminale L 1521  
con 6 divisori regolabili e tappetino**Terminal Shelvings L 1521 with 6 adjustable dividers  
and soft rubber matEtagère terminale L 1521  
avec 6 séparateurs réglables et tapis

Code	Dimension (LxHxD) mm	Weight (kg)
<b>010025620</b>	1.521X100X220	6,39
<b>010025305</b>	1.521X100X260	7,25
<b>010025621</b>	1.521X110X320	9,84
<b>010025310</b>	1.521X110X360	10,8

# Grondaie

## Gutters

## Gouttières



La grondaia allungabile è un elemento terminale totalmente realizzato in acciaio che ha la funzione di contenitore per tubi, canaline, aste e altri oggetti allungati. Sono disponibili in diverse lunghezze da un minimo di 1.014 a un massimo di 4.056 mm, 2 altezze 80-100 e in 3 profondità 220-260-320 mm

The extendable gutter is a terminal item completely made of steel, which is useful to carry tubes, poles and other long things. Gutters are available in different widths, starting from a minimum of 1.014 to a maximum of 4.056 mm, in 2 heights 80-100 and 3 depths 220-260-320 mm.



La gouttière est un élément terminal complètement construit en acier, qui a la fonction de contenir des tuyaux, des conduites à tuyaux, des tiges et tout autre objet allongé. Elles sont disponibles en différentes longueurs, à partir de 1.014 mm minimum, jusqu'à un maximum de 4.056 mm, et en deux hauteurs, de 80 et 100, et en trois profondeurs, de 220-260-320 mm.

Code	Dimension (LxHxD) mm	Weight (kg)
<b>010025601</b>	100x260 Lmin 1.775 Lmax 3.042	10,60
<b>010025694</b>	100x260 Lmin 2.280 Lmax 4.056	16,00
<b>010025695</b>	100x320 Lmin 1.775 Lmax 3.042	11,95
<b>010025696</b>	100x329 Lmin 2.280 Lmax 4.056	17,70



## Piane di lavoro in legno

Wood worktop

Planches de travail en bois



Le piane di lavoro vengono realizzate in multistrato da 20mm trattate antiolio.

Worktops are made of with an anti-oil treatment, 20mm thick marine multi-layer wood.

Les planches de travail en bois sont produites en bois multicouche de 20mm et traitées anti-huile.



TECNOLAM VAN

## Piane di lavoro in legno

Wood worktops

Planches de travail en bois

### Piane in legno con bordo posteriore

Wood worktops with back edge

Planches en bois avec bord arrière

Piana in legno in multistrato da 20mm antiolio, con bordo posteriore da 40 mm in modo da impedire la caduta del materiale sopraposto.

Our in multi-layer wood top, are 20mm thick, anti-oil, treated with a rear, 40 mm thick edge, to avoid the falling down of the material put on it.

Planche en bois multicouche de 20mm anti-huile, avec bord arrière de 40 mm pour éviter la chute du matériel superposé.

**L - 507 / 760 / 1014 / 1268 / 1521**

**D - 360 / 410**

Code	Dimension (LxHxD) mm	Weight (kg)
<b>010025870</b>	507X360X20	2,50
<b>010025721</b>	507X410X20	2,78
<b>010025872</b>	760X360X20	3,50
<b>010025723</b>	760X410X20	3,91
<b>010025874</b>	1.014X360X20	4,55
<b>010025725</b>	1.014X410X20	5,08
<b>010025876</b>	1.268X360X20	5,57
<b>010025727</b>	1.268X410X20	6,22
<b>010025878</b>	1.521X360X20	6,61
<b>010025729</b>	1.521X410X20	7,38

## Morse e porta morse

Vice and vice holder

Etau et porte-étau



I portamorse sono disponibili in due modelli, portamorsa a sfilare e portamorsa basculante.

Vice holders are available in two models: extractable and tilting one.

Les porte-étau sont disponibles en deux modèles, porte-étau glissant ou porte-étau basculant.



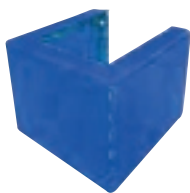


TECNOLAM VAN

## Morse e porta morse

Vice and vice holder

Étau et porte-étau



Code	Weight (kg)
<b>TIPM000112</b>	3,7

### Zoccolo per porta morse basculante

Base for tilting vice holder

Socle pour porte-étau basculant



Code	Weight (kg)
<b>010024250</b>	12,3

### Porta morse basculante

Tilting vice holder

Porte-étau basculant

Il portamorsa basculante è dotato di un sistema composto da un pistone a gas e sistema di bloccaggio rapido ed è realizzato in acciaio verniciato a polveri per garantirne un'ottima resistenza. La sua caratteristica è quella di poter avere un banco morsa in qualsiasi porta del furgone, senza aver bisogno del sostegno dell'arredamento.

The tilting vice holder is provided with a gas piston and a quick blocking system and it's realized of powder-coated steel, to guarantee a perfect resistance. Its main characteristic is to provide the equipment with a vice-workstation available at in any door of the van, without being necessary the van racking support.

Le porte-étau basculant est complèt avec un système composé par un piston à gaz et système de blocage rapide, et il est produit en acier peint époxy pour garantir une parfaite résistance. Sa caractéristique est de pouvoir avoir un établi-étau près de chaque porte du fourgon, sans avoir besoin du soutien de l'ameublement.



Code	Weight (kg)
<b>TIPM000114</b>	12,5

### Supporto morsa basculante

Tilting vice extensible holder

Support pour étau basculant

Pratico supporto regolabile in altezza che viene posto nei portamorsa basculanti per offrire una migliore stabilità durante l'utilizzo della morsa.

Handy adjustable in height support to be use with tilting vice-holders, in order to offer more stability while using a vice.

Pratique support à hauteur à régler, il est placé sur les porte-étaux basculants pour garantir une meilleure stabilité pendant l'utilisation de l'atav.

**Porta morsa a sfilare**

Extractable vice holder

Porte-étau glissant

Il portamorsa a sfilare è un pratico sistema che occupa poco spazio. Viene installato nella struttura dell'arredamento facendone un corpo unico, garantendo così robustezza, praticità e utilità. E' realizzato in acciaio verniciato a polveri.

The extractable vice holder is a handy system that takes little space. It is installed in the structure of the racking system creating in that way a unique body with it and guaranteeing strength, convenience and usefulness. It's all made of powder-coated steel.

Le porte-étau glissant est un système pratique qui prend peu de place. Il est installé dans la structure de l'aménagement en formant un corps unique; de cette façon il garantit solidité, praticité et utilité. Il est réalisé en acier peint époxy



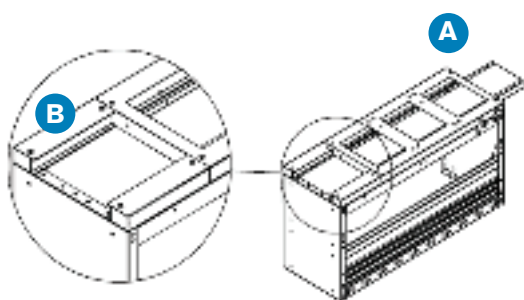
**A**

**Destra / Right / Droit**

Code	Dimension (LxHxD) mm	Weight (kg)
<b>TIPM000012</b>	760x360x40	9,25
<b>TIPM000014</b>	760x410x40	9,78
<b>TIPM000011</b>	1014x360x40	12,62
<b>TIPM000013</b>	1014x410x40	13,05

**Sinistra / Left / Gauche**

Code	Dimension (LxHxD) mm	Weight (kg)
<b>TIPM000002</b>	760x360x40	9,25
<b>TIPM000004</b>	760x410x40	9,78
<b>TIPM000001</b>	1014x360x40	9,78
<b>TIPM000003</b>	1014x410x40	13,05



**B**

**Spessori per porta morsa coppia**

Couple of shims for vice holder

Paires épaisseurs pour porte-étau

Code	Dimension (LxHxD) mm	Weight (kg)
<b>TIPM000002</b>	760x360x40	9,25
<b>TIPM000004</b>	760x410x40	9,78



TECNOLAM VAN

## Morse e porta morse

Vice and vice holder

Etau et porte-étau



Per morsa in acciaio D738-125  
For steel vice D/38 -125  
Pour le vice acciaio D738-125

Code	Weight (kg)
<b>TIPM000004</b>	2

### Base girevole

Revolving base

Base pivotante

Pratico supporto realizzato in acciaio zincato che permetterà la rotazione in qualsiasi posizione e il relativo bloccaggio della morsa attraverso le due pratiche maniglie.

Handy support made of galvanized steel that permits to revolve the vice wherever it is and to block it thanks to two practical handles.

Pratique support en acier zingué qui permet la rotation en chaque position et le blocage de l'étau par deux poignées



Morsa M/91 in acciaio forgiato da 125mm  
Vice M/91 in steel 125mm  
M/91 acier forgé pince 125mm

Code	Weight (kg)
<b>TIPM000003</b>	11

### Morsa in acciaio forgiato

Forged Steel Vice

Etau en acier forgé

Morsa m/91 in acciaio forgiato da 125mm, disponibile anche con ganasce stringitubo.

Vice m/91 in forged steel 125mm, available also with pipeholder jaws.

Etau m/91 125 mm en acier forgé, disponible aussi avec des mâchoires de serrage du tuyau.

## Cassettiere sottopianale

Underfloor chest of drawers

Blocs à tiroirs sous-plancher



Le cassettiere sottopianale offrono la possibilità di trasportare tutto il materiale che vi occorre raddoppiando lo spazio di carico del vostro furgone, in quanto vanno poste al di sotto dell'apposito pianale.

Underfloor chests of drawers offer the possibility to transport every kind of material by doubling space, being installed under the floor.

Les blocs à tiroirs sous planchers offrent la possibilité de transporter tout le matériel occurant, en doublant l'espace de charge de votre fourgon, dès qu'ils sont posées sous le plancher.



Code	Dimension (LxHxD) mm	Cassetti
<b>010026316</b>	500x230x900	1 Cass. H165
<b>010026317</b>	500x230x900	2 Cass. H80

## Slitta portageneratore

Slide for electric generator

Plateau coulissant porte-generateur



### Slitta porta generatore

Slide for electric generator

Plateau coulissant porte-generateur

Slitta estraibile per carichi pesanti, utilizzabile per generatori, materiale Tecnomat e per qualsiasi altro carico che si vuol estrarre dal furgone. Estrazione da 900mm.

Extractable slide for heavy cargos, it can be used also for electric generators, Tecnomat materials and for any other heavy cargo that you want to carry out from the van. 900 mm extraction.

Plateau à extraction pour charges lourdes, peut être utilisé pour les générateurs, et tout autre matériel de chargement Tecnomat que vous voulez sortir de la fourgonnette. Extraction de 900 mm.



Code	Dimension mm	Capacity
------	--------------	----------

<b>TISLI03036</b>	1014x360	230 kg
-------------------	----------	--------

# Rampe di carico

Loading ramps  
Rampes de chargement



Le rampe di carico pieghevoli realizzate in una leggera lega di alluminio sono adattabili a qualsiasi tipo di veicolo. Ideale per disabili, giardinaggio, motocicli, catering, ecc.

Folding aluminium ramps are realized in a light aluminium alloy and can be fixed to every vehicle type. Suitable for disabled people, gardeners, motorcycle loading, catering, ecc.

Les rampes de chargement pliables en alliage d'aluminium léger peuvent être adaptées à tout type de véhicule. Idéales pour les handicapés, le jardinage, les motos, la restauration, etc.

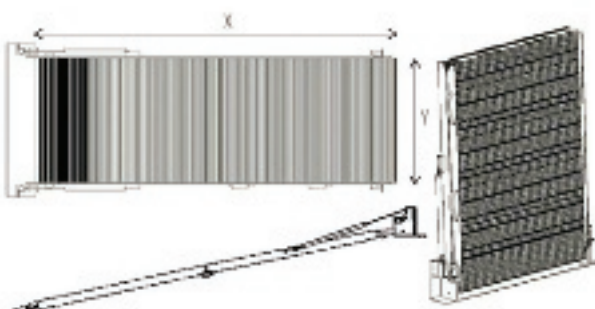
Code	X mm	Y mm	Weight kg	Capacity kg
------	------	------	-----------	-------------

### Rampa fissa / Fixed Ramp / Rampe fixe

<b>0101100101</b>	2000	800	41	700
<b>0101100102</b>	2500	1000	49	700

### Rampa a bandiera / Swivel Ramp / Rampe pivotante

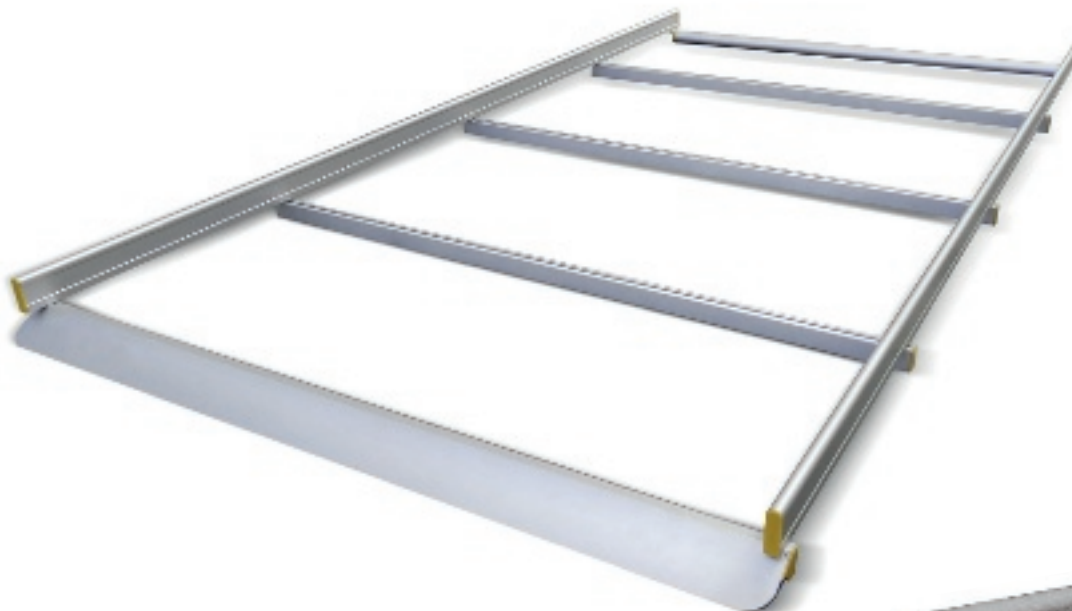
<b>0101100103</b>	2000	800	41	700
<b>0101100104</b>	2500	1000	49	700



## Portatutto e porta scale

Rack roof and ladder

Porte tout et porte-échelles



Leggeri e resistenti sono realizzati con profili di alluminio estruso anodizzato con staffe di ancoraggio e relativa bulloneria in acciaio inox per essere resistenti agli agenti atmosferici quindi massima tenuta contro ossidazioni e corrosioni. Un rullo posteriore in alluminio, inoltre, facilita il carico e lo scarico di oggetti pesanti dal tetto. Silenzioso durante la marcia del veicolo. Uno spoiler anteriore in alluminio, rende la guida aerodinamica eliminando fastidiosi rumori. Adattabili a qualsiasi modello di furgone, consentono anche l'installazione successiva di un portascala. Il portascala Tecnomat è prodotto e realizzato interamente in Italia con materiali eco-compatibili: acciaio e alluminio anodizzato.

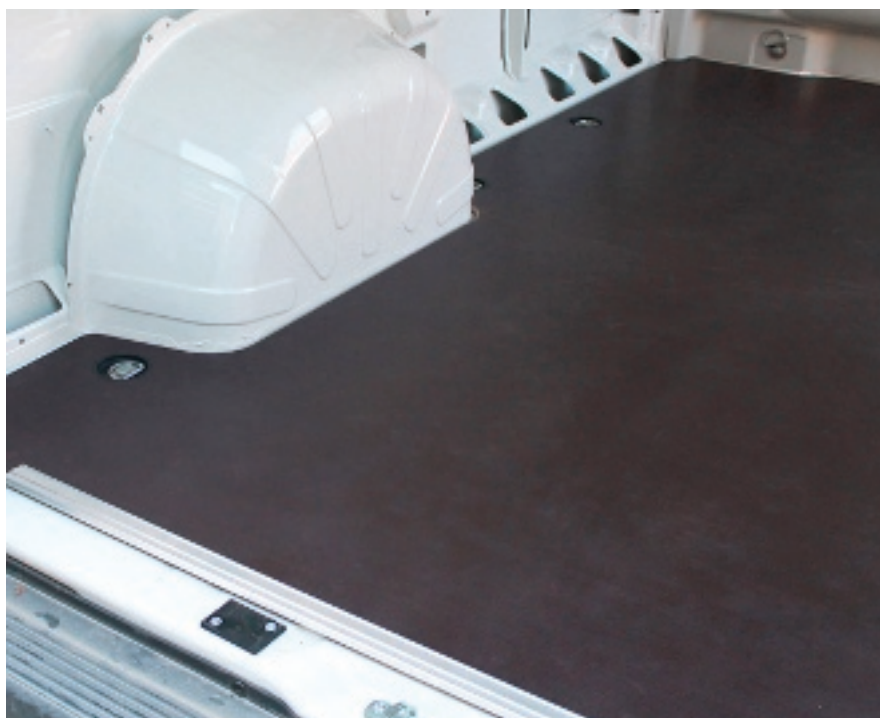
Our roof racks are lights and resistant, they are made of anodized aluminium with anchorage brackets and bolts in stainless steel to be resistant to weather conditions and against oxidations and corrosions. An aluminium rear roller helps the loading and the unloading of heavy objects from the roof. An aluminium front spoiler makes the driving aerodynamic, removing annoying noises. It is very quiet when the vehicle is in motion. They are adaptable to each kind of vehicle, and they also allow a successive installation of a ladder rack. Tecnomat ladder racks are made and realized completely in Italy with eco-friendly materials: steel and anodized aluminium.

Nos porte-tout sont légères et résistants, ils sont réalisés en aluminium anodisé avec pattes d'ancrage et bullonerie en acier inoxydable pour être résistant aux intempéries et contre les oxydations et les corrosions. Un rouleau arrière en aluminium favorise le chargement et le déchargement des objets lourds du toit. Il est très silencieux quand le véhicule est en marche. Un déflecteur antérieur en aluminium rend la conduite aérodynamique, en éliminant les bruit désagréables. Les porte-tout sont adaptable à tous les modèles de véhicule, et ils permettent aussi l'installation future d'un porte-échelle. Le porte-échelle tecnomat est produit et réalisé entièrement en Italie avec des matériaux écologiques: acier et aluminium anodisé.



## Pianali / Rivestimenti interni

Floors / Internal Linings  
Planchers / Revêtements intérieurs



**I nostri pianali** sono realizzati in multistrato marino finlandese. La parte superiore del pianale in multistrato marino è protetta da un filo di resina protettivo di alto spessore, il quale funge da antiscivolo, mentre la parte inferiore è ricoperta sempre da una resina solo protettiva. I bordi del pianale sulle porte posteriori e su quelle laterali sono protetti da angolari in alluminio, eccetto alcuni modelli che li hanno solo sulle porte posteriori.

**Our floors** are made in Finnish nautical multi-layer wood. The upper part of the floor is protected by an elevated thickness film of resin, that act as anti-slip, while the inferior part is covered a only protective resin. The exposed edges of the floor on the lateral and rear doors are protected by angles in aluminium, except a few models that have the angles only on the rear doors.

**Nos planchers** sont réalisés en multicouche marin finlandais et aluminium ondulé en 3 mm + 2 mm. La partie supérieure du plancher est protégée par une couche de résine de haute épaisseur, qui agit comme un anti-glissant, tandis que la partie inférieure est recouverte par une résine de protection. Les bords du plancher sur les portes arrières et latérales sont protégés par des angles en aluminium, sauf certains modèles qui les ont seulement sur la porte arrière.

## Pianali / Rivestimenti interni

Floors / Internal Linings

Planchers / Habillages



I rivestimenti per pareti tecnomat vengono realizzati in due tipi di materiali:

Polipropilene sp. 4 Mm, molto leggero e resistente ad urti medio leggeri.

Lamiera preverniciata sp. 0,4Mm resistente ad urti medio pensanti.

The linings for walls tecnomat are made of two kinds of material:

Polypropylene 4mm thick, very light and resistant to medium and light shocks.

Repainted sheet 0,4mm thick, resistant to medium and heavy shocks.

Les habillages pour paroi tecnomat sont réalisés en deux matériaux:

Polypropylène de 4 mm d'épaisseur, très léger et résistant à chocs moyenne et légère.

Tôle repeinte de 0,4 mm d'épaisseur résistant à chocs moyenne et lourds.

## Accessori bloccaggio materiali

Blocking Accessories

Accessoires de blocage du matériel





## Accessori bloccaggio materiali

Blocking Accessories

Accessoires de blocage du matériel

### Barra fermacarichi in acciaio con cinghia

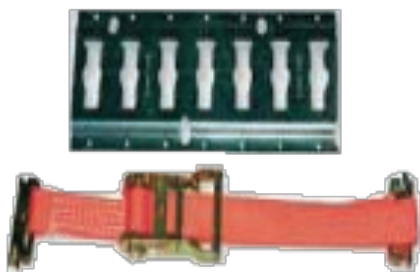
Load restraining bar in steel with belt

Barre arrete-charge en acier avec sangle

Pratico sistema che permette di tenere ancorato al furgone ogni tipo di carico. La struttura in acciaio zincato disponibile in verghe da 3 metri e può anche essere tagliata a misura secondo le esigenze del cliente. Le cinghie in nylon con tirante a cricchetto hanno una portata di 4.000 Kg e sono disponibile in varie lunghezze.

.Practical system through which it is possible to keep every kind of load anchored to the van. The structure is in galvanized steel available in 3m long bars that can also be cut following the customer's needs. The belts are in nylon with ratchet, their maximum load is of 4000 Kg their and are available in various lengths.

Un système très pratique qui vous permet de garder ancré dans le fourgon chaque charge. Le châssis en acier galvanisé est disponible en tiges de 3 mètres et peut aussi être coupé à la taille en fonction des exigences du client. Les sangles en nylon avec attache à cliquet ont une capacité de 4.000 kg et sont disponibles en différentes longueurs.



Code	Dimension L/mm	CINGHIA L 1500mm LASHING STRAP L 1500mm AVEC SANGLE 1500mm	kg
<b>TIABR0003</b>	1000		2,21
<b>TAABF00003</b>	1000	<b>X</b>	2,86
<b>TIABR0004</b>	1500		3,30
<b>TAABF00004</b>	1500	<b>X</b>	3,95
<b>TIABR0005</b>	2000		4,42
<b>TAABF00005</b>	2000	<b>X</b>	5,07
<b>TIABR0006</b>	2500		6,63
<b>TAABF00006</b>	2500	<b>X</b>	7,53
<b>TIABR0007</b>	3000		8,80
<b>TAABF00007</b>	3000	<b>X</b>	9,70
<b>TIABR0001</b>	360		0,90
<b>TAABF00001</b>	360	<b>X</b>	1,45
<b>TIABR0002</b>	500		1,10
<b>TAABF00002</b>	500	<b>X</b>	1,65



TECNOLAM VAN

## Accessori bloccaggio materiali

Blocking Accessories

Accessoires de blocage du matériel



### Chinghia con moschettoni

Belt with Spring Clip

Sangle avec mousquetons

Code	Dimension L/mm		kg
<b>TIABCI0002</b>	1500		0,65
<b>TIABCI0003</b>	3000		0,90

### Ganci appendi tutto

Hanging Hooks

Crochets accroche tout

Gancio in metallo da applicare nelle barre fermacarichi, munito di un pratico sistema che ne permette lo spostamento in maniera semplice e rapida, in modo tale da soddisfare le diverse necessità di carico del materiale da fissare al furgone.

Metal hook to apply to the load restraining bars, provided with a practical system that allows to move it easily and quickly, so that different cargo needs can be satisfied.

Crochet métallique à appliquer dans le barres arrete-charge, équipé d'un système pratique qui lui permet de se déplacer facilement et rapidement, de manière à répondre aux différents besoins de charge du matériel à fixer au fourgon



Code	PER BARRA FERMACARICHI FOR CARGOWEIGHT BAR ACCROCHER TOUTES		kg
<b>TIABGAT00</b>			0,30
<b>TIABGAT001</b>	<b>X</b>		0,40



## Accessori bloccaggio materiali

Blocking Accessories

Accessoires de blocage du matériel

### Barra fermacarichi in alluminio

Aluminium load restraining bar

Barre arrête-charge en alu

Barra fermacarichi in alluminio da fissare alla carrozzeria. Adatta per il fissaggio degli anelli e delle cinghie con uncino.

Aluminium block bar to fix to the van's body, suitable for fixing ring, and belts with hook

Barre arrête-charge en alu, à fixer sur la carrosserie; elle sert à fixer les barres arrête-charge rondes lourdes et les sangles à crochet.



Code	Dimension L/mm		kg
<b>TIABR00012</b>	1000		0,70
<b>TIABR00011</b>	1500		1,05
<b>TIABR00010</b>	2000		1,40
<b>TIABR00009</b>	3000		2,10



### Anello di fissaggio per barra in alluminio

Fixing Ring For Aluminium Bar

Anneau de fixation pour barre en alu

Code			
<b>TIABGAN002</b>			

### Cinghia con uncino

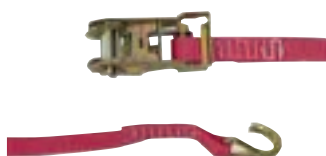
Belts with hook

Sangle à crochet

Cinghia con uncino per barre fermacarichi in alluminio.

Belt with hook for aluminium block bar.

Sangle à crochet pour barres arrête-charge en alu



Code	Dimension L/mm		kg
<b>TIABCI0005</b>	3000		0,90



TECNOLAM VAN

## Accessori bloccaggio materiali

Blocking Accessories

Accessoires de blocage du matériel

### Barra fermacarichi ad arpioni in alluminio

Aluminium load restraining bar with spikes

Barre arrête-charge à croc en alu

Barra fermacarichi ad arpioni in alluminio da fissare alla carrozzeria, adatta per il fissaggio delle cinghie con arpione.

Aluminium load restraining bar with spikes to fix to the body of the vehicle, suitable for the fixing of straps with spike.

Barre arrête-charge à croc en alu à fixer à la carrosserie, adapte à fixer les sangles à croc



Code	Dimension L/mm	kg
<b>TIABR0008</b>	3000	4,10

### Cinghia con arpione

Belt with spikes

Sangle à croc

Cinghia con arpioni per barre fermacarichi ad arpioni in alluminio

Belt with spikes for aluminium block bars with spikes

Sangle à crocs pour barres arrête-charge à crocs en alu



Code	Dimension L/mm	kg
<b>TIABCI0004</b>	3000	0,90



TECNOLAM VAN

## Accessori bloccaggio materiali

Blocking Accessories

Accessoires de blocage du matériel

### Cinghia elastica fermacarichi regolabile

Load retraining belt elastic and adjustable

Sangle élastique arrête-charge, réglable

Cinghia elastica fermacarichi regolabile con ganci ha la funzione di immobilizzare icarichi. È disponibile in due misure 760-1320 mm e da 1000-2000 mm.

Load retraining belt elastic and adjustable with hooks used for securing cargos. It's available in two dimensions 760-1320 mm and 1000-2000 mm.

Sangle élastique arrête-charge réglable avec crochets: elle a la fonction d'immobiliser les charges. Disponible en deux tailles: 760-1320 mm et 1000-2000 mm



Code	Dimension L/mm	con GANCI with HOOKS avec CROCHETS
<b>TACFG100200</b>	1000 > 2000	
<b>TIABCF1020</b>	1000 > 2000	<b>X</b>
<b>TACFG076180</b>	760 > 1800	
<b>TIABCF7618</b>	760 > 1800	<b>X</b>



### Gancio per cinghia elastica regolabile

Hook for lashing strap

Crochet pour sangle élastique réglable

Code		
<b>TIABGAN001</b>		





TECNOLAM VAN

## Accessori bloccaggio materiali

Blocking Accessories

Accessoires de blocage du matériel



### Asta fermacarichi regolabile

Adjustable load restraining bar

Tige arrête-charge réglable

Le aste fermacarichi permettono di bloccare facilmente il materiale all'interno del vano di carico del furgone, e grazie al loro rivestimento in gomma non rovinano il materiale e garantiscono un buon grip durante il trasporto. Sull'estremità sono dotate di sistema a molla che le permette di fissare e sganciare in tutta facilità lungo le apposite rotaie poste nella parte superiore e inferiore del furgone.

Load restraining allow to secure the material inside the vehicle in an easy way and, thanks to their rubber cover, thanks to them the material is not damaged and a good grip is guaranteed during the transport. At both ends the bars are provided with a spring-system that allows to hook and unhook them easily all along the foreseen rails placed in the upper and lower part of the vehicle.

Les tigs arrête-charge permettent de bloquer facilement le matériel l'intérieur du compartiment de charge de la fourgonette, et grâce à leur revêtement en caoutchouc elles n'abiment pas le matériel et assurent un bon grip pendant le transport. Elles sont dotées à leurs bouts d'un système à ressort qui lui permet de fixer et décrocher facilement le long des rails spéciaux, qui se trouvent sur la partie supérieure ou inférieure du fourgon.

Code	Dimension L/mm
------	----------------

<b>TIAFCKIM6</b>	1250 > 1750
<b>TIAFCKIM7</b>	1550 > 2050
<b>TIAFCKIM8</b>	2000 > 2500



TECNOLAM VAN

## Accessori bloccaggio materiali

Blocking Accessories

Accessoires de blocage du matériel

### Gancio flessibile porta attrezzi

Flexible hook with tool holder

Crochet flexible porte outil

I nuovi attacchi flessibili Tecnomlam, permettono di sostenere elementi verticali pesanti con sezione tubolare nelle pareti del vostro furgone. Essi possono essere inseriti in serie su una guida di alluminio per essere montati più facilmente, ma sono anche predisposti per essere montati direttamente e singolarmente su una superficie.

The new Tecnomlam flexible hooks are suitable for everyone who needs to carry cylinders on their vehicle. Thanks to the special strengthened shelf it's possible to install and fix several cylinders in a safe way. Even in case of an abrupt bracking anything moves and damages people or things inside the vehicle

Les nouvelles crochets flexibles de Tecnomlam permettent de soutenir les éléments verticaux lourds dans les parois de votre camionnette. Ils peuvent être placés en série sur un rail en alu pour être montées plus facilement, mais elles sont également adaptés pour le montage direct et individuel sur une surface.



Code Dimension Ømm

**TIABGF2030** Ø 20/30

**TIABGF3040** Ø 30/40



### Guida in alluminio per gancio flessibile

Aluminium rail for flexible hook

Glissière en alu pour crochet flexible

Code

**TIABGA0000**

## **Accessori vari**

Various Accessories

Accessoires



TECNOLAM VAN

## Accessori vari

Various Accessories

Accessoires



### Portarotolo

Paper Roll Holder

Porte rouleau de papier

Sono disponibili in due misure, per rotoli da 250 e 270 mm. Struttura in ferro verniciato a polveri, dotato di sistema che impedisce lo srotolamento della carta.

Available in two dimensions, for paper rolls of 250 and 270 mm. Structure in powder coated iron, provided with a system that doesn't let the paper unroll.

Ils sont disponibles en deux tailles, pour rouleaux de 250 et 270 mm. Structure en fer peint époxy, avec un système qui empêche le déroulement du papier

Code	Description	kg	Rotolo/Roll/Rouleau
<b>TIPC00001</b>	BIG	0,70	<b>TIACRCG000</b> BIG
<b>TIPC00002</b>	SMOLL	1,05	<b>TIACRCP000</b> SMOLL

### Portatanica con tanica in plastica 10L con rubinetto

Canister Holder and Plastic Canister 10L Capacity with TapSa




Porte-jerrycane et jerrycane plastique 10L avec robinet

Portatanica in ferro verniciato compreso di tanica in plastica da 10L con pratico rubinetto che permette di regolare il flusso dell'acqua in uscita.

Iron canister holder provided with plastic canister (10L of capacity) with a practical tap allowing to regulate water flow.

Porte-jerrycane en fer et jerrycane plastique 10 L, avec pratique robinet qui permet de régler la quantité d'eau qui sort.



Code	Description	kg
<b>TAAPT0002</b>		2,00
<b>TIPT00002</b>		1,50
<b>TIPT00001</b>		0,50



TECNOLAM VAN

## Accessori vari

Various Accessories

Accessoires



### Dosatore per sapone

Soap Dispenser

Doseur de savon

Dosatore di sapone liquido con pratico sistema di fissaggio alla carrozzeria.

Dispenser for liquid soap provided with practical system for fixing it on the body of the van.

Doseur de savon liquide avec un système très pratique de montage sur la carrosserie.

Code	Capacity	kg
<b>TIACDS0001</b>	1000 ml	0,25

### Portatanica più tanica in ferro 20L

Canister Holder and Iron Canister 20L Capacity

Porte -jerrycane + jerrycane en fer 20L

Portatanica in ferro verniciato compreso di tanica in ferro da 20L adatta per il trasporto di oli o carburanti.

Iron canister holder provided with iron canister (20L of capacity) suitable for carrying on oil or fuel.

Porte-jerrycane en fer et jerrycane en fer 20L, indiqué pour le transport de huile ou carburants



Code	Description	kg
<b>TAAPTNO0001</b>		5,50
<b>TIPT000001</b>		4,30
<b>TIPT000002</b>		1,20



TECNOLAM VAN

## Accessori vari

Various Accessories

Accessoires



### Sella porta cavi

Cable Hanger

Sella porta cavi

Pratica struttura interamente in alluminio che permette di sorreggere cavi e può essere fissata sia nei moduli Tecnomlam sia sul furgone.

Practical structure completely made of aluminium that permits to support cables. It can be fixed both on Tecnomlam modules and on the inside of the vehicle.

Pratique structure en alu qui vous permet de soutenir les câbles et qui peut être fixée sur les modules Tecnomlam si bien que sur le fourgon.

Code	Dimension L/mm	kg
<b>TISP000022</b>	220	0,33
<b>TISP000026</b>	260	0,52
<b>TISP000032</b>	320	1,04

### Valigetta primo soccorso

First Aid Kit

Mallette de premier secours

Valigetta a norma 81/2008, e dotata di un telaio che viene fissato sul furgone, che dal quale si può facilmente asportare la valigetta quando serve. È dotata di tutto il necessario per il primo soccorso.

Case in accordance with law 81/2008, provided with support racket that is fixed on the inside of the van, from which the case is easy to remove when needed. It's provided with all the necessary for first aid..

Mallette aux termes de la loi 81/2008, complète d'un châssis fixés sur le fourgon, duquel on peut facilement emporter la mallette. Elle est complète avec tout ce qui est nécessaire pour le premier secours



Code	kg
<b>TIACP00001</b>	220



TECNOLAM VAN

## Accessori vari

Various Accessories

Accessoires



### Porta estintore

Extinguisher support

Extincteur support

Code	kg
<b>TIAPE00005</b>	3,00



### Pannelli forati portautensili con ganci

Perforated Tool-Holder Panel With Hooks

Panneau percés porte-outillage avec crochets

Disponibili in due misure 360x241x10 e 360x483x10, possono essere fissati sia sui fianchi dei prodotti Tecnomam o sulle pareti del furgone. I ganci possono essere acquistati separatamente o in kit da 10 ganci.

Available in two dimensions 360x241x10 and 360x483x10, they can be fixed both on the sides of Tecnomam products and on the walls of the vehicle. Hooks can be bought separately or in kits of 10 pieces.

Disponibles en deux dimensions 360x241x10 et 360x483x10, ils peuvent être fixés sur les côtés des produits Tecnomam ou sur les parois de la fourgonnette. Les crochets peuvent être achetés séparément ou en kits de 10 pièces.

Code	Kit 10 GANCI Kit 10 HOOKS Kit 10 CROCHETS
------	---

<b>TAAPFFG2436</b>	<b>X (9AGPF00KIT)</b>
<b>TIACPF2436</b>	
<b>TAAPFFG4836</b>	<b>X (9AGPF00KIT)</b>
<b>TIACPF4836</b>	



TECNOLAM VAN

## Accessori vari

Various Accessories

Accessoires

### Tasche in ferro / Iron Pockets / Poches en fer

Realizzate interamente in ferro verniciato possono essere fissate sia lungo i fianchi dei prodotti Tecnomlam o sulle pareti del furgone. Esse sono state realizzate per contenere materiale cartaceo come ad esempio depliant dimostrativi o cataloghi..

Made entirely in painted iron they can be fixed whether all long the sides of Tecnomlam products or on the walls of the van. They have been studied for keeping papers and documents, such as leaflets or catalogues.

Fabriqu e enti rement en fer peint, elles peuvent  tre fix es sur les cot es des produits Tecnomlam ou sur les parois du fourgon. Elles sont   utiliser pour contenir des papiers, comme d pliant ou catalogues.



Code	Dimension mm	kg
<b>TIACT01832</b>	30x180x320	0,54
<b>TIACT02436</b>	30x41x360	0,74
<b>TIACT02441</b>	30x241x410	0,86
<b>TIATA40000</b>	A4	0,59

### Gancio semplice in metallo

Single metal hook

Crochet simple en m tal



Code	Dimension mm
<b>TIACGPF23118</b>	35
<b>TIACGPF23119</b>	75

### Gancio doppio in metallo

Double metal hook

Crochet double en m tal



Code	Dimension mm
<b>TIACGPF23125</b>	35
<b>TIACGPF23126</b>	50
<b>TIACGPF23127</b>	75





### Gancio in metallo con doppia clip

Metal hook with double clip

Crochet en métal avec double clip

Code	Dimension mm
------	--------------

<b>TIACGPF23142</b>	19 mm
---------------------	-------



### Gancio in metallo con clip

Metal hook with clip

Crochet en métal avec clip

Code	Dimension mm
------	--------------

<b>TIACGPF23143</b>	25 mm
---------------------	-------

<b>TIACGPF23145</b>	32 mm
---------------------	-------



### Mensola porta bombolette

Spray holder diameter

Tablette porte-bombe de spray

Code	Dimension mm
------	--------------

<b>TIACGPF23176</b>	70 mm
---------------------	-------



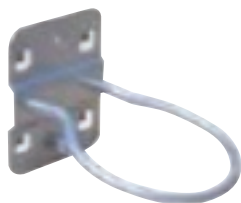
### Porta punta a 11 alloggiamenti

Drillholder for 11 pieces

Porte-points pour 11 pièces pour panneau percé

Code
------

<b>TIACGPF23181</b>
---------------------



### Gancio con anello in metallo

Hook with metal ring

Crochet avec anneau en métal pour panneau percé

Code	Dimension mm
------	--------------

<b>TIACGPF23151</b>	ø60 mm
---------------------	--------



### Gancio calamitato in metallo

Magnetic metal hook

Crochet magnétique pour panneau percé

Code
------

<b>TIACGPF23194</b>	ø40 mm
---------------------	--------



## Areatore per ventilazione furgone

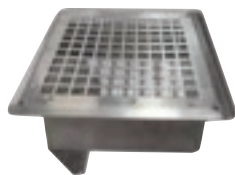
Ventilator

Aérateur pour ventiler le fourgon



Code AERATORE SU TETTO PER VENTILAZIONE  
ROOF VENTILATOR  
AÉRATEUR POUR TOIT

**TIAGRVT000** 0,30 kg



Code AERATORE PER PAVIMENTO IN ACCIAIO INOX 163X163  
STAINLESS STEEL FLOOR VENTILATOR 163X163  
AÉRATEUR INOX POUR PLANCHER 163X163

**TIAGRVP000** 0,70 kg



Code GRIGLIA DI AERAZIONE IN ACCIAIO INOX 277x145  
STAINLESS STEEL GRILLE AIR VENT 277X145  
GRILLE D' AÉRATION EN ACIER INOX 277X145

**TIAGRVO00** 0,46 kg

## Lucchetti Ufo Defender

Ufo Defender Locks

Serrures Ufo Defender

Il lucchetto Ufo Defender rappresenta una delle chiusure più sicure e resistenti allo scasso, in quanto il cilindro è antitrapano e antipicking.

Ufo Defender is one of the safest and resistant to break-in locking systems thanks to its anti-drilling and anti-picking cylinder.

La serrure Ufo Defender est l'un des verrous les plus sûrs et anti-effraction, parce que le cylindre est anti-trépan et anti-picking.



Code N.1 LUCCHETTO UFO CLASSICO IL DEFENDER  
N.1 UFO DEFENDER LOCK  
N.1 SERRURE UFO DEFENDER

**TIASUD000**

Code N.2 LUCCHETTI UFO CLASS DEFENDER+3 CHIAVI  
N.2 UFO DEFENDER LOCKS + 3 KEYS  
N.2 SERRURES UFO DEFENDER + 3 CLES

**TIASUD001**



TECNOLAM VAN

## Accessori vari

Various Accessories

Accessoires



### Piastra per fissaggio alla carrozzeria

Bodyvan Fixing Plate

Plaque de fixation à la carrosserie

Piastra che permette il fissaggio dei prodotti Tecnomat alla carrozzeria.

Plate through which tecnomat products can be fixed to the body of the vehicle.

Plaque de montage qui permet le fixation des produits Tecnomat à la carrosserie.

Code	Dimension L/mm
------	----------------

<b>TIFIS00150</b>	150
-------------------	-----

<b>TISP000225</b>	225
-------------------	-----



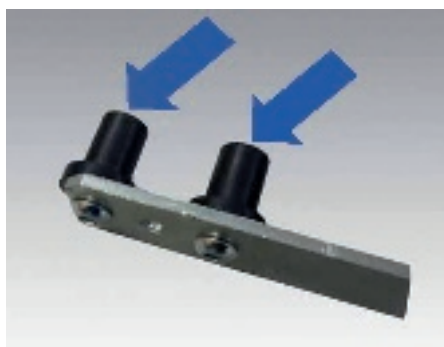
### Inserto antivibrante tenuta a strappo di 2500 N

Anti-Vibration Insert With Pull Tight 2500 N

Insert antivibrantions avec tenue à coup de 2500 N

Code
------

<b>TIACIA0001</b>
-------------------



### KIT STAFFA / Kit breaker / Kit support

Code
------

<b>40000536</b>
-----------------

## **Accessori elettrici**

Electric accessories

Accessoires électriques



TECNOLAM VAN

## Accessori elettrici

Electric Accessories

Accessoires électriques



### Palfoniera al Led 500 Lumen 12V

Led Lamps 500 Lumen 12V

Plafonniers au Led Lumen 12V

Code	Dimension mm	kg
<b>TIAEL00016</b>	150x75x15	0,30

### Avvolgicavo con lampada

Cable-Roll Up With Lamp

Enrouleur de câbles avec lampe

Avvolgicavo auto-rientrante dotato di portalamпада e lunghezza cavo 15 metri 12/230 V.

Cable-roll up self-withdrawing provided with a lamp holder and a cable 15 m long, 12/230 V.

Enrouleur de câbles auto-retrant dotés de porte-lampe et longueur du câble 15 mètres 12/230 V



Code	Description	kg
<b>TIAVL00001</b>	ART. 5907/T306	0,95

### Lampeggiante / Rotating Light / Clignotant

Lampeggiante rotante di colore arancione, dotato di base magnetica che ne facilita notevolmente il montaggio e il posizionamento in qualsiasi angolo del furgone, sia all'esterno che all'interno. Il collegamento avviene tramite la presa maschio da porre nell'accendisigari. Il cavo è ad aspirale in modo da ridurre l'ingombro

Orange rotating light, provided with a magnetic base through which it can be easily assembled and can be put in any corner of the vehicle, both inside and outside. In order to let it work the male plug has to be connected to the cigarette lighter plug. It's provided with a spiral cable for reducing the volume.

Clignotant rotant, couleur orange, avec une base magnétique qui facilite grandement le montage et le placement dans n'importe quel coin de la camionnette, à l'extérieur ou à l'intérieur. La connexion se fait par la prise mâle à mettre dans l'allumeur des cigares. Le câble est en colimaçon pour réduire l'encombrement.



Code	Description	kg
<b>TIAVL00002</b>	ORANGE - 12V	1,20



## Accessori elettrici

Electric Accessories

Accessoires électriques

### Faretto orientabile magnetica

Magnetic adjustable light

Spotlight magnétique orientable

Il faretto da 12v va collegato mediante l'impianto elettrico alla batteria. È dotato di base magnetica che ne facilita notevolmente il montaggio e il posizionamento in qualsiasi angolo del furgone, sia all'esterno che all'interno. Il collegamento avviene tramite la presa maschio da porre nell'accendisigari. Il cavo è ad spirale in modo da ridurre l'ingombro.

The 12v light has to be connected to the battery through a wiring. It's provided with a magnetic base through which its assembly becomes very easy and it can be put in any corner of the vehicle, both inside and outside. In order to have light the male plug has to be connected to the cigarette lighter plug. It's provided with a spiral cable for reducing the volume.

Le spotlight 12v doit être connecté à la batterie par le système électrique. Il est doté de base magnétique pour faciliter au maximum le montage e le positionnement à n'importe quel angle de la camionnette, soit à l'extérieur soit à l'intérieur. La connexion se fait par la prise mâle à mettre dans l'allumeur des cigares. Le câble est en colimaçon pour réduire l'encombrement.



Code	Description
<b>TIAL0003</b>	55W - 12V - 178x86

Code	IMPIANTO PER CORRENTE 12V SYSTEM FOR 12V ELECTRICITY SYSTEME ACTUEL	kg
<b>TIAPR0001</b>		0,20



TECNOLAM VAN

NOTES



TECNOLAM VAN

NOTES





TECNOLAM VAN

NOTES

Progetto Grafico:

**Zaf Design**

Roberto Zaffini

Stampa:

**Ideostampa srl**

Edizione Marzo 2019



## TECNOLAM VAN



**Tecnolam** srl

Via Flaminia 2/B **Calcinelli**

61036 Colli al Metauro (PU)

Italy

Tel. 0721/876010

Fax 0721/876012

[www.tecnolamweb.com](http://www.tecnolamweb.com)

[info@tecnolamweb.com](mailto:info@tecnolamweb.com)



*Noi rispettiamo l'ambiente*